



Ideas.
Insights.
Impact.



MAKING AN IMPACT: REALIST APPROACH TO ASSESSING PARTNERSHIPS, NETWORKS AND CLUSTERS

IDEAS. INSIGHTS. IMPACT.

Contact:

kathryn.graham@albertainnovates.ca

www.impactationlab.ca

Dr. Kathryn Graham

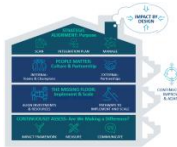
ICRP

May 15, 2023

Overview



1. Context - Different Approaches and Tools to Assess Research Impact



2. Our Novel Approach to Performance and Impact Management Systems



Realist Case Illustrative Examples



Ripple Effect



3. Optimizing Impact – What is on the next horizon?

WHO WE ARE: THE PURPOSE OF THE IMPACT ACTION LAB



- The IAL partners with ecosystem players to amplify and activate the economic and societal impact of their Research and Innovation investments
- We are a Global Research and Innovation Impact Network (GRIIN) of experts and practitioners
- We work with institutions to enhance their capacity by incorporating performance and impact management systems that generate value and provide benefits to their community

Different Approaches to Assessing Impact





Looking to Different International Research Assessment Systems

Canada

United Kingdom

Germany

Australia

New Zealand

Hong Kong

They Generally Measure both Academic and Wider Societal Impact

[Source: Clarivate Global Research Report Examines Role of Research Assessment with a Review of Six Regional Systems - Clarivate](#)

Looking to Different International Research Impact Assessment Frameworks

Payback Framework

(UK, CA, Hong Kong, USA, AU)

N= 6

RI* Framework

(UK)

N=1

CAHS

(CA, Spain, AU)

N=4

Monetization Models

(USA, AU, UK)

N=4

Social Impact Assessment & REF

(NE, UK)

N=4

Realist Evaluation & Participatory RI

(UK, USA)

N = 2



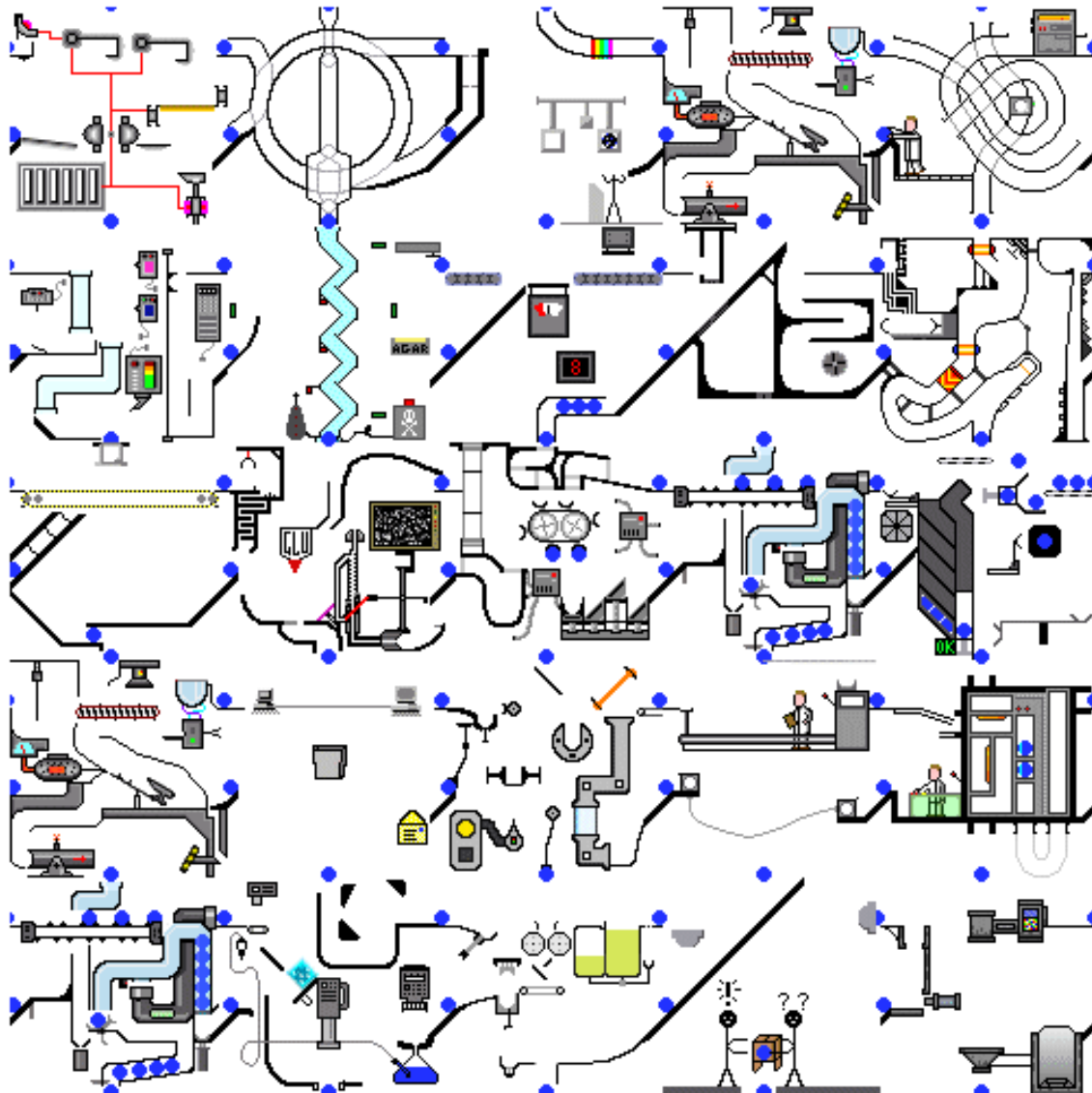
Impact Understood as Multidimensional
Use of Mixed Methods and Multiple Data Sources

ALBERTA INNOVATES



*Research Impact

Source: [Research impact: a narrative review | BMC Medicine | Full Text \(biomedcentral.com\)](#)



What is the Latest Thinking?

FIRST WE RECOGNIZE THAT MEASURING IMPACT IN A COMPLEX ECOSYSTEM IS HARD

We take a partnership approach to experimenting and testing across different jurisdictions to share knowledge, learnings and actionable insights

**A NOVEL HOLISTIC
APPROACH TO MAKING
AN IMPACT AND IT'S
ASSESSMENT**



How We Got Here – We Want to Understand:

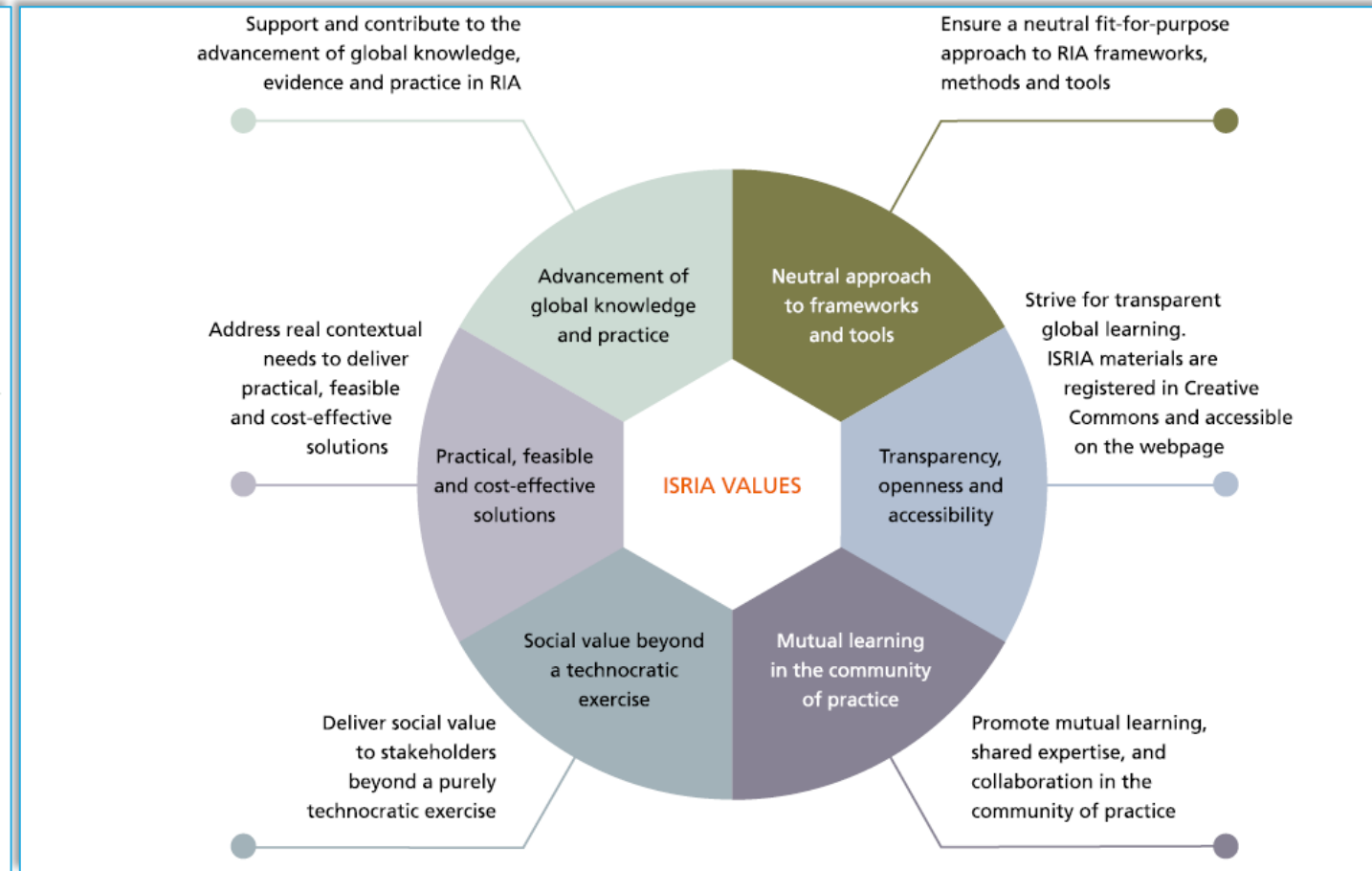
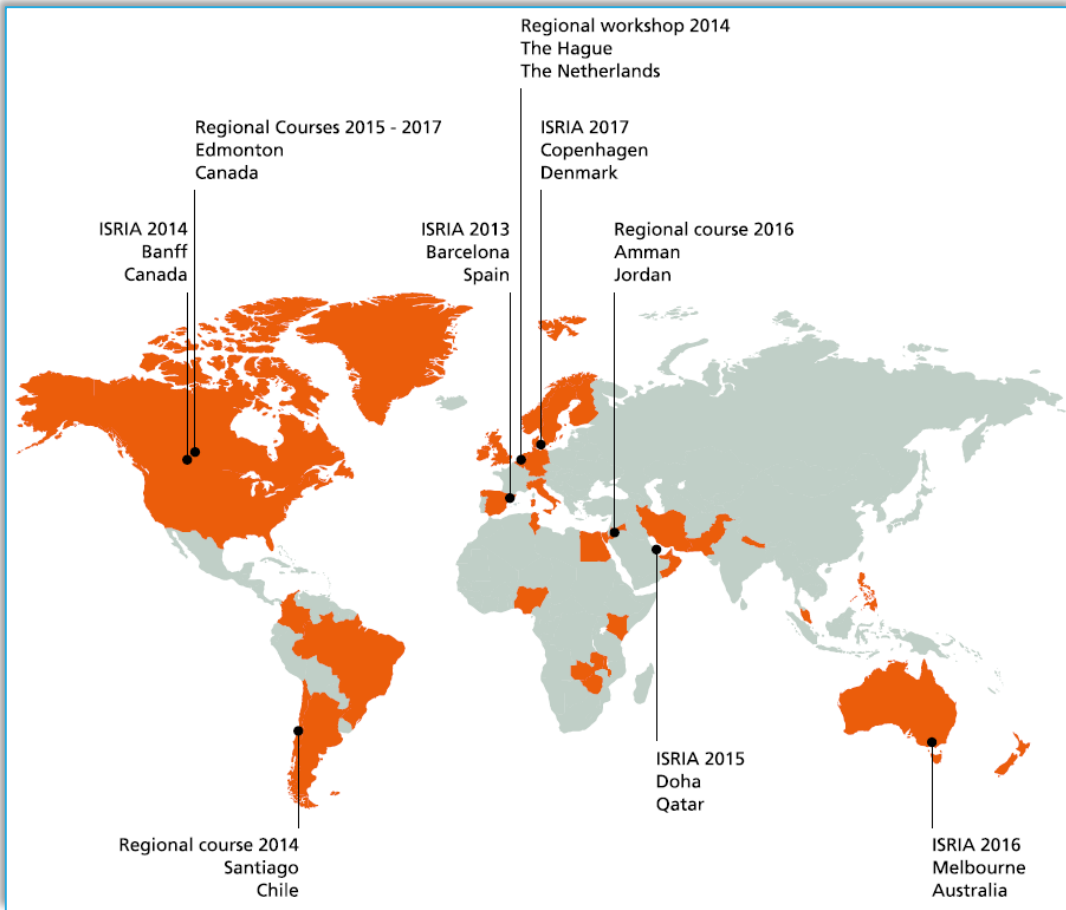


- ***Will we make a difference?***
- ***Are we making a difference?***
 - *How will we know if our work is making a difference?*
- ***Have we made a difference to people's lives?***

We Generate Evidence from our Performance Monitoring, Evaluation Systems & Realist Case Studies to Make Real World Impact for our Communities

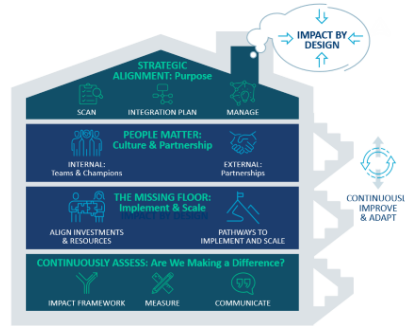
International School on Research Impact

Assessment: International Tool Box



Thought Leadership: What is New in Our Toolbox?

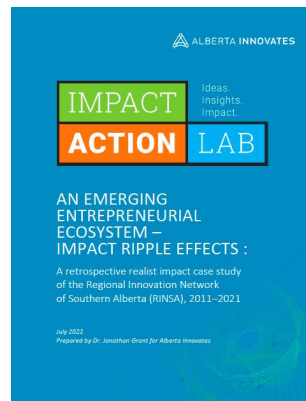
Assessing Impact Differently: By Design and Holistically



Pathways to Impact: Measuring Progress to Outcomes



Realist Impact Case Studies



Impact Network Effects



Trust-Based Measures



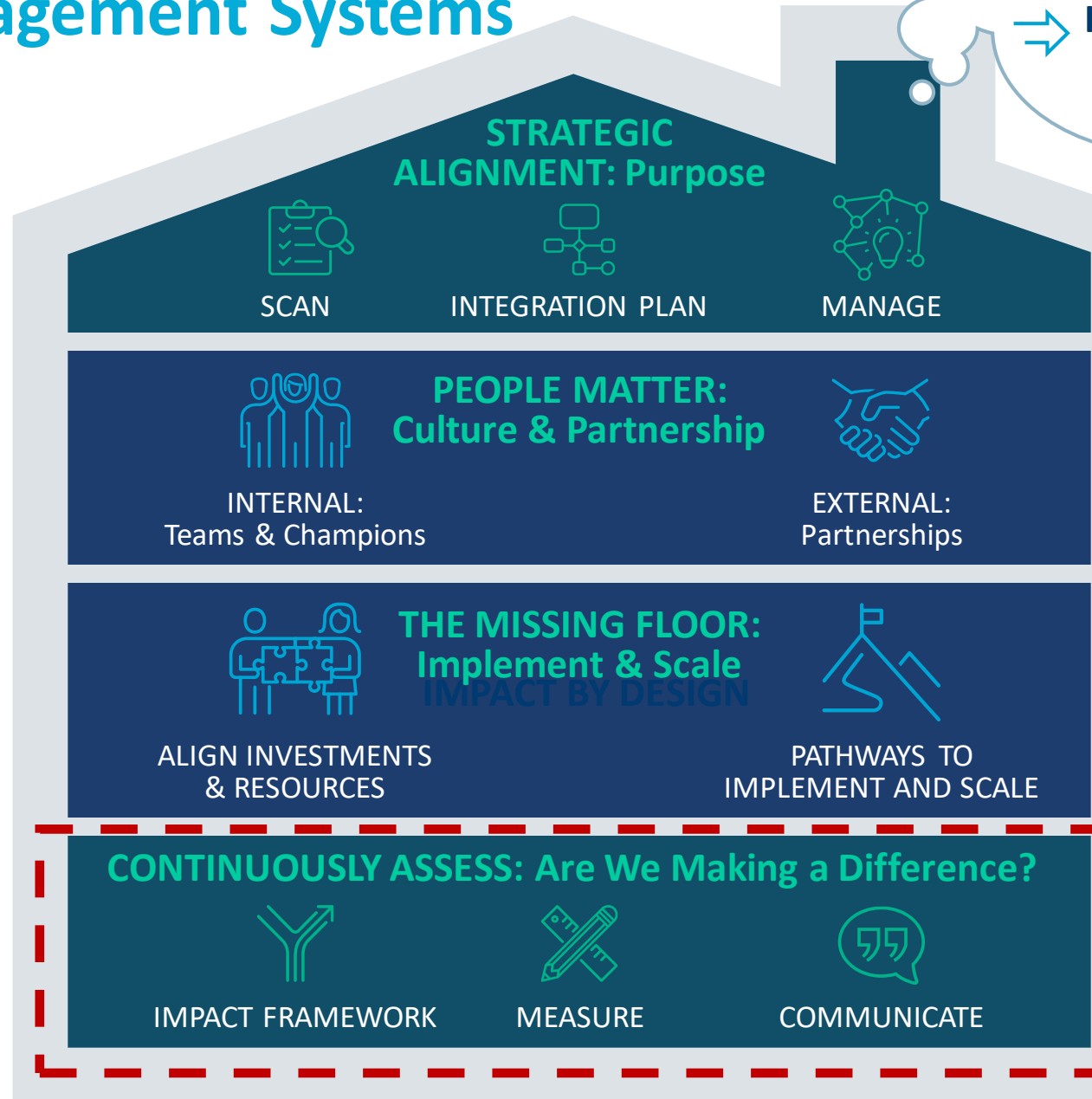
Combining Breadth and Depth Approaches

Source: Impact Action Lab - Alberta Innovates

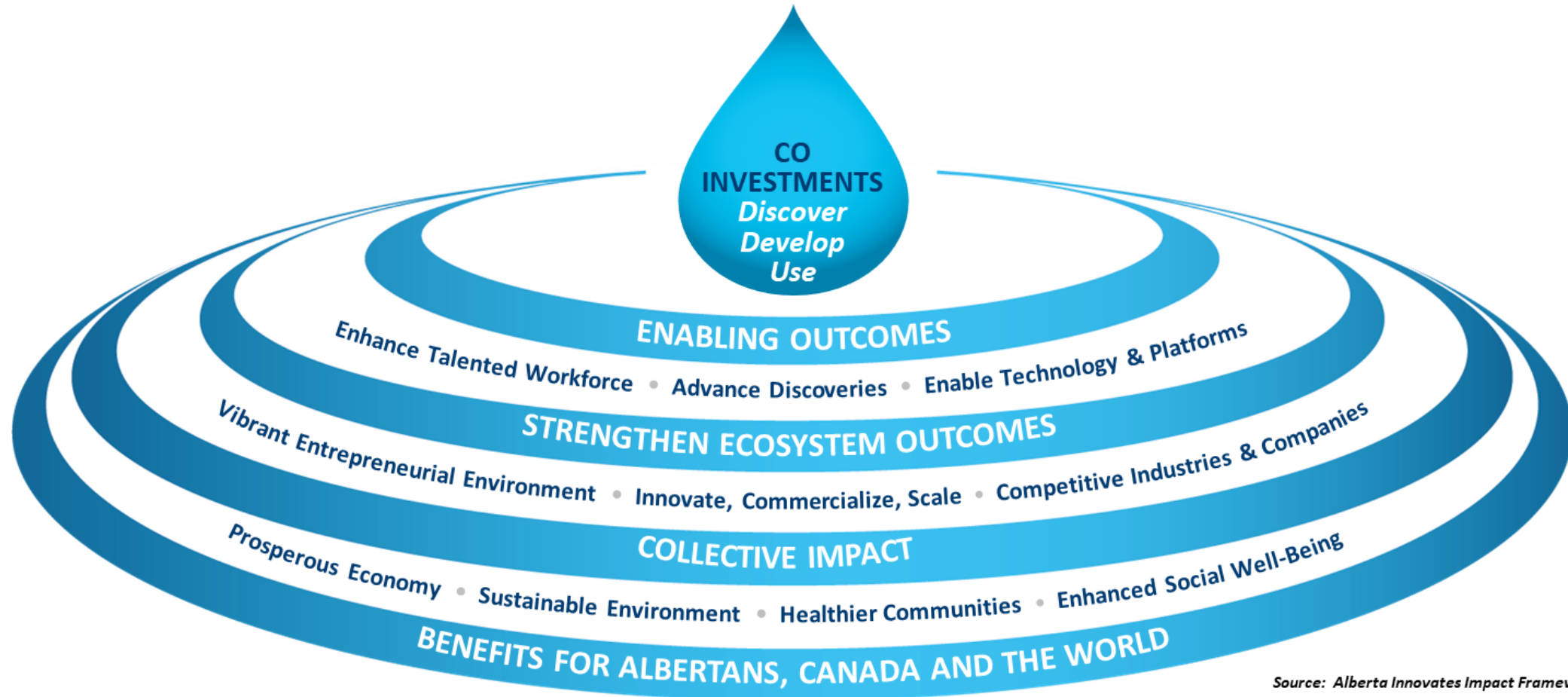


Our Novel Holistic Approach to Performance and Impact Management Systems

An Integrated, Outcomes-Focused, Lifecycle Approach for complex partner, network and cluster initiatives across multiple jurisdictions



Alberta Innovates Impact Framework



Source: Alberta Innovates Impact Framework 1.3



Evidence for tool – Payback, CAHS and over 20 years of implementation



Impact Journey: Pathways to Impact



Integrated Knowledge Mobilization & Implementation Science

Trailhead

★ 2023 *Baseline*

Milestones

Track knowledge mobilization & implementation progress

Track adoption progress

Track scaling and progress to desired outcomes

2027...
Summit

Desired impacts

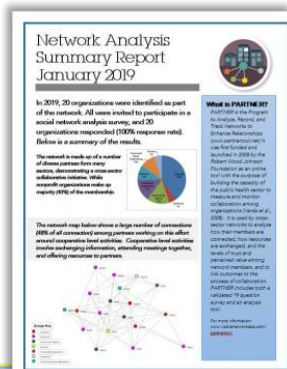


Figure developed by the Impact Action Lab and adopted for the Scaling for Impact course

Our Impact Communications Toolbox



Impact Reports and Dashboards



Network Analysis

ALBERTA INNOVATES

IMPACT ACTION LAB

Ideas. Insights. Impact.

AN EMERGING ENTREPRENEURIAL ECOSYSTEM – IMPACT R

A retrospective of the Regional I of Southern Alberta

July 2022
Prepared by Dr. Jonathan

Evaluation Reports & Realist Case Studies

ALBERTA INNOVATES

IMPACT ACTION LAB

Ideas. Insights. Impact.

A Formative Realist Impact Assessment of Alberta Innovates Scaleup and Growth Accelerator Program

May 2024
Prepared by Jonathan Grant for Alberta Innovates

ALBERTA INNOVATES

ENTREPRENEURIAL INVESTMENTS IMPACT

Technology Development Advisors

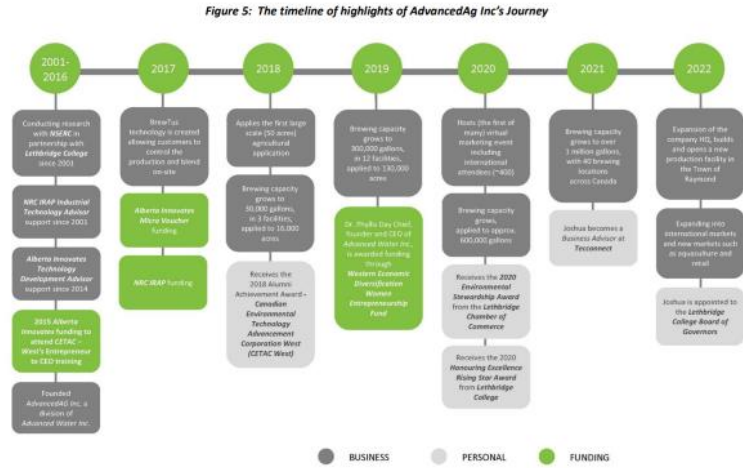
DRUGBANK: The Future of Precision Medicine

COMPANY PROFILE

- Alberta based company established in 2006.
- Incorporated in 2013.
- month long target online database of drug and drug target information.
- Uses data driven technology to advance health care by enabling machine learning, drug re-purposing, precision medicine and drug discovery.
- 2024 winner of many Canada's high-growth entrepreneurs award.

GOAL

Timeline of highlights of AdvancedAg Inc's Journey



Impact Narratives & Success Stories



Realist Impact Case Studies

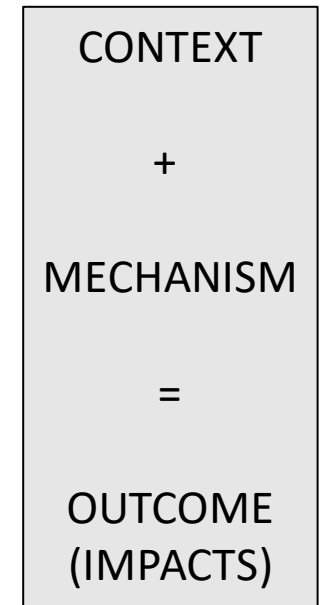
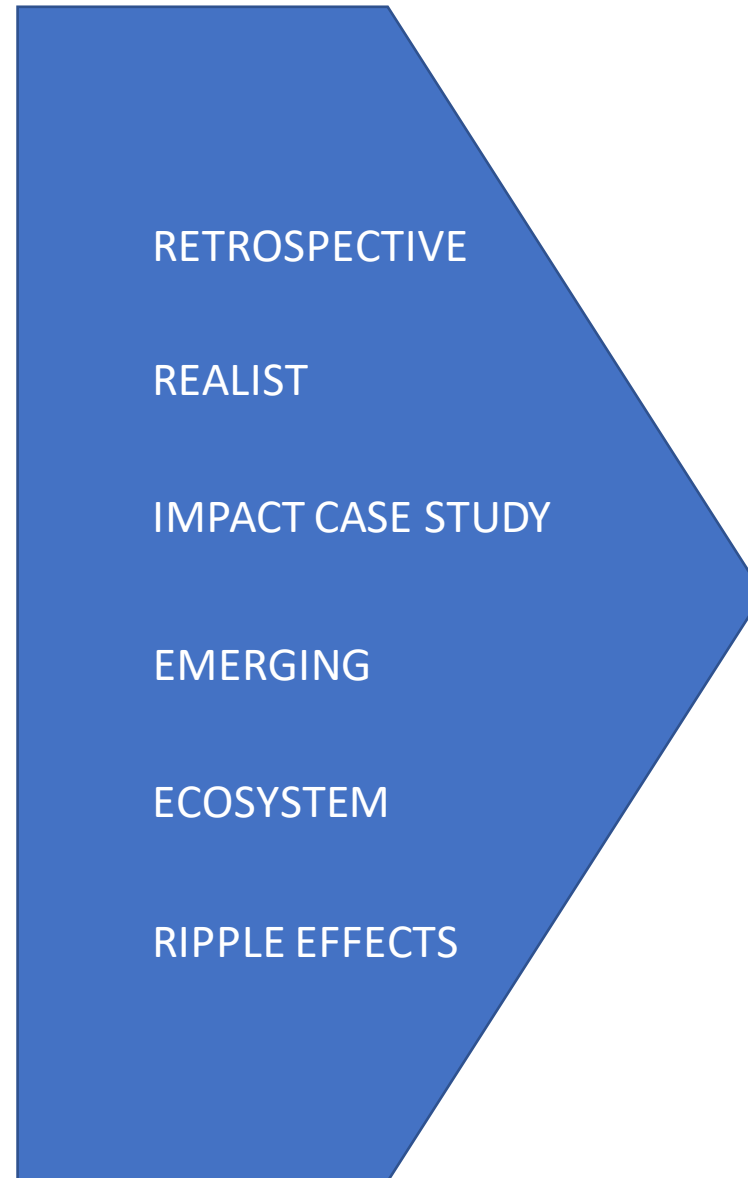
RINSA – Regional Innovation Network Southern Alberta



AN EMERGING ENTREPRENEURIAL ECOSYSTEM – IMPACT RIPPLE EFFECTS :

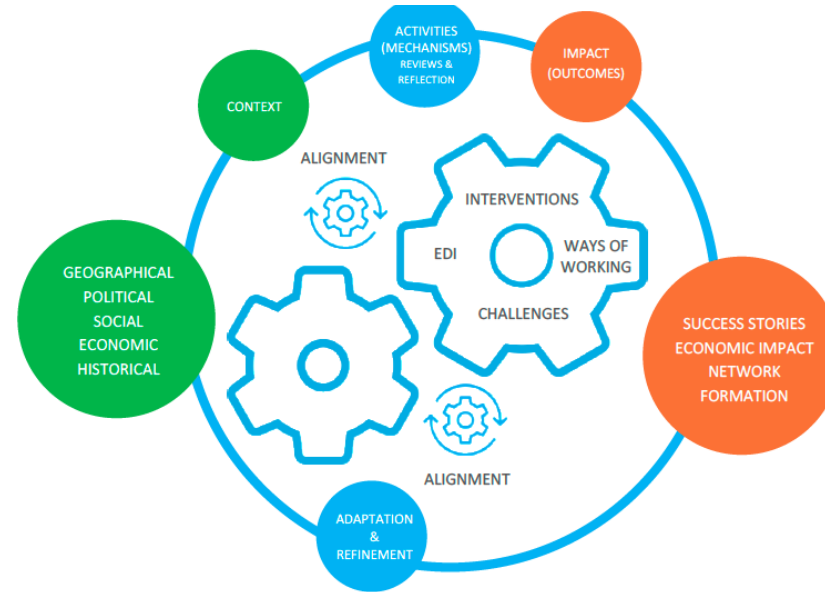
A retrospective realist impact case study
of the Regional Innovation Network
of Southern Alberta (RINSA), 2011–2021

July 2022
Prepared by Dr. Jonathan Grant for Alberta Innovates



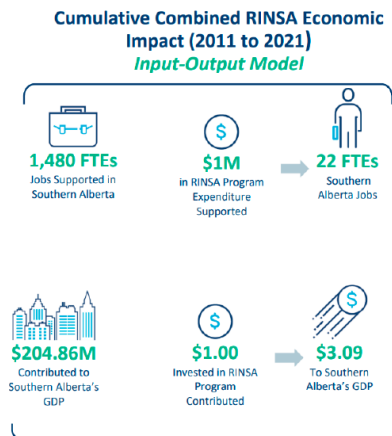
Realist Assessment Approach

Context – Mechanism – Outcomes (Impacts)

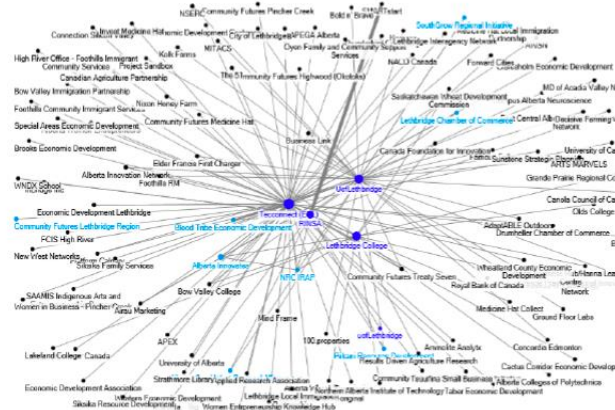


Actionable Insights

SIGNIFICANT ECONOMIC IMPACTS



SIGNIFICANT NETWORK EFFECTS



SOME INTERESTING 'HIDDEN IMPACTS

- Knocked down silos
- 'One stop shop'
- Responsive

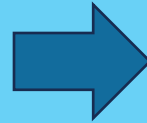


2. Scale UP GAP – Global and Local Accelerators & Network

Scale Up Gap Program – Accelerator Network

Problem

Canada has a grow and scale up gap for companies



Solution

Put more effort into scaling high potential startups – Invest in Local and Global accelerators



What mix of policy instruments and funding levers can we use?

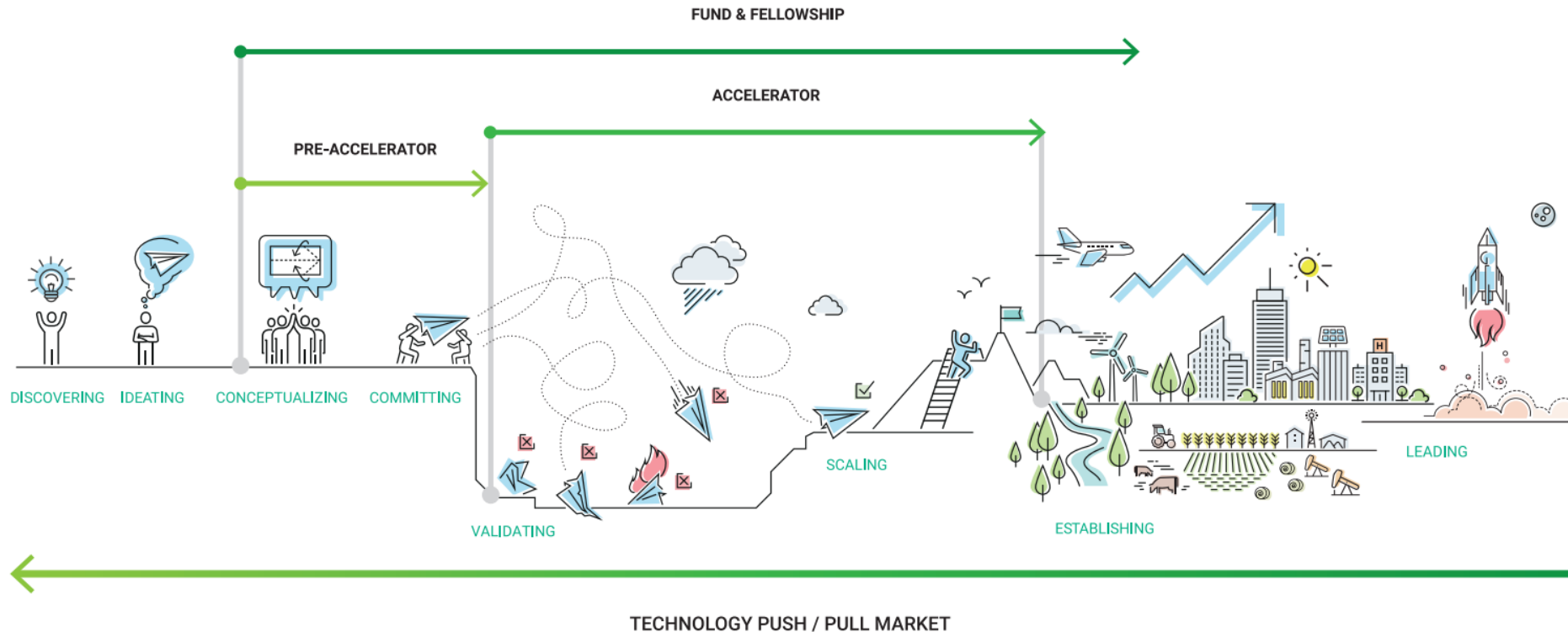


Accelerator



<https://albertainnovates.ca/wp-content/uploads/2023/06/Compendium-Of-Tools-Mar-2023-v2.pdf>

Bridging the GAP – Horizontal View

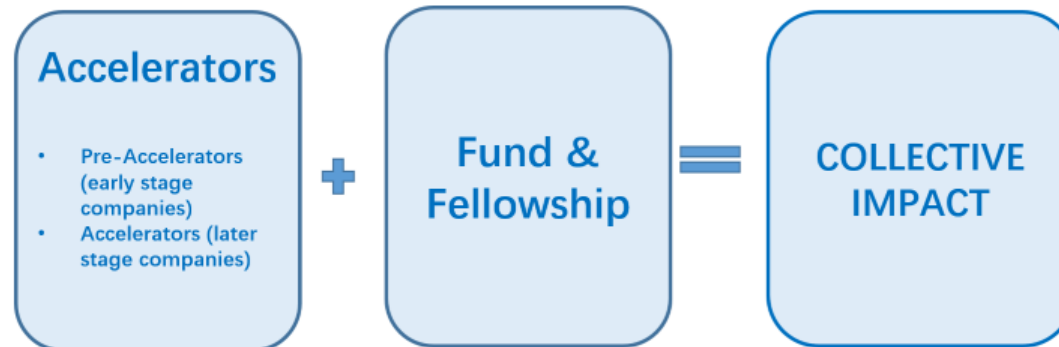


ECONOMIC IMPACT

SOCIAL & COMMUNITY IMPACT

- ✓ Network Effects
- ✓ Global Connections
- ✓ EDI /SDG

TWO PROGRAM PILLARS



Formative Realist Impact Assessment...



Mixed Methods Data Collection

Continuous Adaptive Learning System

Stakeholder Interviews

Document & archival review

Alberta market landscape

Leading practice review

Network review

Methodological review of economic assessment

Internal Report

Incorporate Learnings and Refine and Update Program Protocol

External Report and Present on Actionable Insights

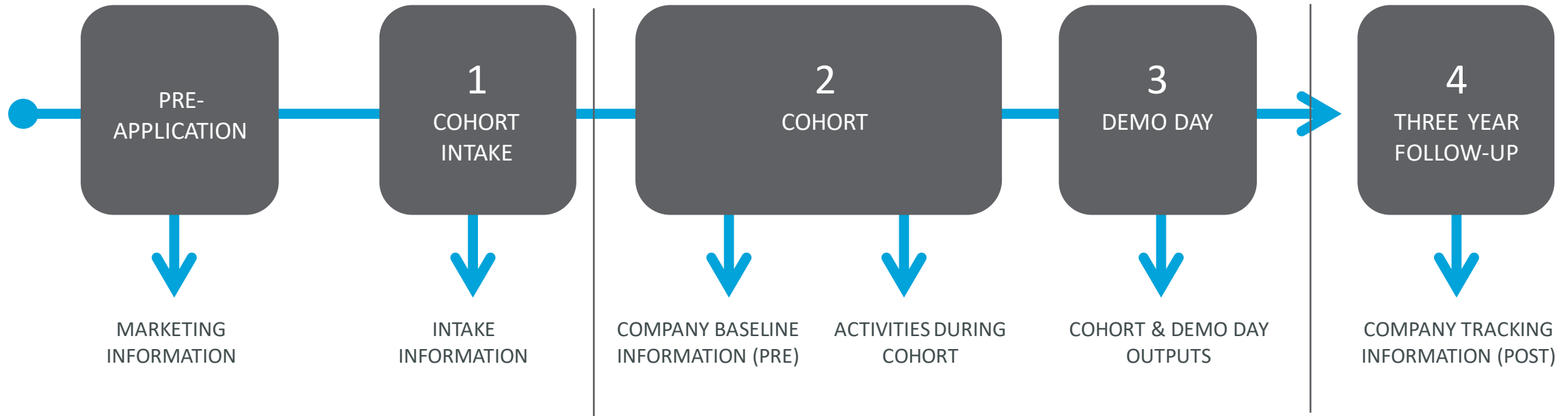
Incorporate System and Methodology Learnings into PIMS

Use for decision making, business case and going forward programming

Explore Impact Action Lab Realist Assessment Partnerships



LIFECYCLE data collection tool – we used the performance monitoring information as part of the evidence for assessment



A Sneak Peak of the Impact Assessment

Actionable Insights

If you don't have an impact strategy or system, you can't reach the summit

You need fit for context mix of models and services along the client journey

Fellowship is part of social capital and the thread that connects the ecosystem for sustainability

Entrepreneurial Capital = financial, human social & culture

Desired Scaleup and Growth Outcomes and Impact

**OVERCOMING THE SCALEUP GAP:
A FRAMEWORK FOR IMPACT**

 Kathryn Graham
Executive Director, Impact Action Lab at Alberta Innovates

 Reesa John
Director, Fund & Fellowship at Alberta Innovates

 Jonathan Grant
CEO at Different Angles Ltd

Attendees will be given access to an exclusive, exclusive preview of the full impact report.

 Macleod B
May 30
10:45 am - 11:30 am

investurescanada.com
INVENTURES

Optimizing Impact – What is on
the next horizon



What is on the Next Horizon?

Societal Impact

Global
Collaboration

Network Effects

Adaptive
Management

Equitable Health
EDI, Indigenous led
Research

Citizen engagement

Implementation Learnings:

One size does not fit all

Measure progress, intangibles, leading indicators

Institutionalization and use of automated impact reporting systems



THANK YOU.

Impact Framework Reference In the Context of Cancer

Review

> Health Res Policy Syst. 2021 Mar 11;19(1):36. doi: 10.1186/s12961-020-00658-x.

Evaluating cancer research impact: lessons and examples from existing reviews on approaches to research impact assessment

Catherine R Hanna ¹, Kathleen A Boyd ², Robert J Jones ³

Affiliations + expand

PMID: 33706777 PMCID: PMC7953786 DOI: 10.1186/s12961-020-00658-x