



THE CANADIAN CANCER RESEARCH **CONFERENCE** | LA **CONFÉRENCE** CANADIENNE SUR LA RECHERCHE SUR LE CANCER



New Horizons in Cancer Research:
Opportunities and Challenges

Nouveaux horizons dans la recherche sur le cancer :
opportunités et défis

DRAFT – 08-oct.-25

SCIENTIFIC PROGRAM | PROGRAMME SCIENTIFIQUE

November 2-4 | 2025

Telus Convention Centre and Hyatt Regency Hotel Calgary, Alberta

2 au 4 novembre | 2025

Centre des congrès Telus et hôtel Hyatt Regency Calgary (Alberta)



THANK YOU TO OUR SUPPORTERS | MERCI À TOUS NOS PARTENAIRES

PLATINUM LEVEL | NIVEAU PLATINE



SILVER LEVEL | NIVEAU ARGENT



THANK YOU TO OUR SUPPORTERS | MERCI À TOUS NOS PARTENAIRES

BRONZE LEVEL | NIVEAU BRONZE



FRIENDS | AMIS

Current Oncology - an Open Access Journal by MDPI

Fonds de Recherche du Québec (FRQ) – secteur Santé

Leukemia & Lymphoma Society of Canada

McGill University, Faculty of Medicine and Health Sciences,
sponsored by the Rose Wiselberg Foundation

University of Alberta, College of Health Sciences,
Faculty of Medicine & Dentistry, Department of Oncology

We would like to acknowledge Telus for providing Internet services at the Convention Centre, and Doug Eagleton, Calgary Fire Department, for facilitating permits for the event.

OVERVIEW: New Horizons in Cancer Research: Opportunities and Challenges*

For all events beginning before November 2, consult the full program when available. Overview is colour-coded - venue maps follow

Saturday, November 1, 2025							
3:00 pm	REGISTRATION OPEN – EXHIBITORS AND POSTER PRESENTERS PLEASE SET-UP BETWEEN 3:00-6:00 PM (<i>Telus Exhibition Hall (C/D/E) and Pre-function</i>)						
6:00 pm	<i>Pre-registration:</i> Reimagining Cancer Clinical Trials and Prevention: Strategies to Improve Access and Inclusion (<i>Telus Macleod Pre-function</i>)						
Sunday, November 2, 2025							
7:45 am	Opening Ceremony (<i>Telus Macleod Hall</i>)						
10:00 am	Break (<i>Telus Macleod Pre-function</i>)						
10:30 am	Plenary 1 – Immune system and cancer: What's next on the horizon? (<i>Telus Macleod Hall</i>)						
Noon	Lunch (<i>Telus Exhibition Hall (C/D/E)</i>)						
12:15 pm	Tech Talk: Canada's Lung Cancer Action Plan (<i>Telus Exhibit Hall Pre-function</i>)						
12:15 pm					RRCancer's Quebec General Assembly (Closed to RR Members) <i>Doll/Herald</i>	<i>Pre-registration: Care for First Nations, Inuit and Métis Children with Cancer in Canada</i> <i>Walker/Bannerman</i>	
1:15 pm	Presentation – Dr. Paul Hébert, President, CIHR (<i>Telus Macleod Hall</i>)						
1:45 pm	Keynote Presentation – Professor Gail Garvey (AM), The University of Queensland (<i>Telus Macleod Hall</i>)						
2:15 pm	<i>Transition to Hyatt</i>						
2:30 pm	Concurrent Series A						
	A1-Drug Discovery, Design, Delivery and Resistance <i>Imperial 4/6</i>	A2-Immunotherapy <i>Imperial 1/2/3</i>	A3-Pediatric Cancer Across the Patient Journey <i>Imperial 5/7/9</i>	A4-Patient Centred Research/Patient Engagement <i>Imperial 8</i>	A5- Health Equity <i>Doll/Herald</i>	A6-Indigenous Knowledge and Methodologies in Cancer Research <i>Stephen AB</i>	<i>Pre-registration: Introduction to Oncology-focused Startups with the Creative Destruction Lab</i> <i>Walker/Bannerman</i>
4:00 pm	Break (<i>Imperial Grand Foyer 3</i>)						
4:30 pm	Lightning Series A						
	A1-Blood Cancers <i>Imperial 4/6</i>	A2-Brain Tumours <i>Imperial 1/2/3</i>	A3-Breast Cancer <i>Imperial 5/7/9</i>	A4-Colorectal Cancer <i>Imperial 8</i>	A5-Lung Cancer <i>Doll/Herald</i>	A6-Ovarian Cancer <i>Stephen AB</i>	A7-Prostate Cancer <i>Walker/Bannerman</i>
5:05 pm	<i>Transition to Telus Exhibition Hall (C/D/E)</i>						
5:15 pm	Poster Session 1 (odd numbered posters) & Exhibits (<i>Telus Exhibition Hall (C/D/E)</i>)						
6:00 pm							<i>Pre-registration: RRCancer Networking Event</i> <i>Walker/Bannerman</i>
7:00 pm	Anew Research Collaborative, Imagine...Film Screening and Panel Discussion (<i>Telus Macleod Hall</i>) – Open to all delegates						
Monday, November 3, 2025							
8:00 am	Plenary 2 - BIG data in cancer research: Too BIG to fail? (<i>Telus Macleod Hall</i>)						
9:30 am	Break (<i>Imperial Grand Foyer 3</i>)						
10:00 am	Concurrent Series B						
	B1-Molecular and Cellular Biology <i>Imperial 4/6</i>	B2-Clinical Research and Trials <i>Imperial 1/2/3</i>	B3-Patient Experience <i>Imperial 5/7/9</i>	B4-Screening <i>Imperial 8</i>	B5-Health Economics/Outcoms Research <i>Doll/Herald</i>	B6-Indigenous Cancer Care Across the Continuum <i>Stephen AB</i>	<i>Pre-registration: Navigating the Path to Publication</i> <i>Walker/Bannerman</i>
11:30 am	Lunch (<i>Telus Exhibition Hall (C/D/E)</i>)						
11:45 am	Tech Talk: Beyond the Silos: Uniting Health Data for Real Impact, hosted by CIHR and Genome Canada (<i>Telus Exhibit Hall Pre-function</i>)						
11:45 am					AYA Research Priorities (Open to all interested delegates) <i>Doll/Herald</i>		

	Concurrent Series C						
12:45 pm	C1-Tumour Biology, Immunology and the Microenvironment <i>Imperial 4/6</i>	C2-Bioinformatics and Precision Medicine <i>Imperial 1/2/3</i>	C3- Cross-Pillar Cancer Research Across the Lifespan <i>Imperial 5/7/9</i>	C4-Clinical Research and Radiotherapy <i>Imperial 8</i>	C5-Environmental Impacts on Cancer <i>Doll/Herald</i>	C6-First Nations, Inuit and Métis Cancer Prevention and Screening <i>Stephen AB</i>	<i>Pre-registration:</i> CanPath Synthetic Dataset Workshop – Part 1 <i>Walker/Bannerman</i>
2:15 pm	Break (<i>Imperial Grand Foyer 3</i>)						
	Concurrent Series D						
2:45 pm	D1-Precision Oncology Continuum: From Molecular Markers to Therapeutic Resistance Pathways <i>Imperial 4/6</i>	D2-From Risk Assessment, Screening and Surveillance to Survivorship <i>Imperial 1/2/3</i>	D3-Health Human Resources in Cancer Control <i>Imperial 5/7/9</i>	D4-Lung Cancer in Canada: Plans and Trends <i>Imperial 8</i>	D5-Cervical Cancer and HPV-related Interventions <i>Doll/Herald</i>	D6-First Nations, Inuit and Métis Stories <i>Stephen AB</i>	<i>Pre-registration:</i> CanPath Synthetic Dataset Workshop – Part 2 <i>Walker/Bannerman</i>
4:15 pm	Transition						
	Lightning Series B						
4:25 pm	B1-Cancer Biology <i>Imperial 4/6</i>	B2-Metastasis <i>Imperial 1/2/3</i>	B3-Prevention and Screening <i>Imperial 5/7/9</i>	B4-Treatment and Drug Resistance <i>Imperial 8</i>	B5-Enhancing Immunotherapy <i>Doll/Herald</i>	B6-Survivorship <i>Stephen AB</i>	B7-Improving Cancer Care <i>Walker/Bannerman</i>
5:00 pm	Transition to Telus Exhibition Hall (C/D/E)						
5:10 pm	Poster Session 2 (even numbered posters) & Exhibits (<i>Telus Exhibition Hall (C/D/E)</i>)						
7:00 pm	<i>Pre-registration:</i> Charbonneau Networking Event <i>Walker/Bannerman</i>						
Tuesday, November 4, 2025							
8:00 am	Plenary 3 – Metabolic Health and Cancer (<i>Telus Macleod Hall</i>)						
9:30 am	Break (<i>Telus Macleod Pre-function</i>)						
10:00 am	Plenary 4 - Rising cancer rates in adults under 50 years: What do we need to know? (<i>Telus Macleod Hall</i>)						
11:30 am	Closing Remarks (<i>Telus Macleod Hall</i>)						
12:30 pm	Grab & Go Lunch (<i>Telus Macleod Pre-function</i>)						
12:30 pm	VIP Lunch (by invitation) (<i>Telus Exhibition Hall E</i>)						

*Program and timing subject to change.

CONFERENCE COMMITTEES

The success and impact of the Canadian Cancer Research Conference is driven in large part by our committees, representing advocates and leaders in cancer research from across Canada. Their time, thoughtfulness, and expertise are deeply appreciated.

Executive Planning Committee

The Executive Planning Committee ensures the organization of a relevant and engaging conference. It is responsible for overseeing the development of support opportunities and logistical aspects of the conference.

Co-Chairs:

- Fei-Fei Liu, MD, FRCPC, FASTRO, FCAHS
Scientific Director, CIHR Institute of Cancer Research; Professor, Department of Radiation Oncology, University of Toronto; Radiation Oncologist & Senior Scientist, Princess Margaret Cancer Centre – University Health Network
- Paula J. Robson PhD CHE
Scientific Director, Cancer Research and Analytics, Cancer Care Alberta, Alberta Health Services

Members:

- Judy Bray, PhD, Canadian Cancer Society
- Darren R. Brenner, PhD, Co-Chair, Scientific Program Committee (SPC)
- Spencer B. Gibson, PhD, Co-Chair, Scientific Program Committee (SPC)
- Christy Holtby, Alberta Cancer Foundation
- Rosilene Kraft, PhD, Chair, PIP Working Committee
- Raja Mita, PhD, Alberta Innovates
- Paul O'Connell, PhD, Leukemia and Lymphoma Society of Canada
- Dajan O'Donnell, PhD, Cancer Research Society
- Cindy Peltier, PhD, Representative, First Nations, Inuit and Métis Working Group
- Rebecca Tamarchak, PhD, Ontario Institute for Cancer Research
- Chantale Thurston, Member, PIP Working Committee
- Jim Woodgett, PhD, Terry Fox Research Institute

Scientific Program Committee

The Scientific Program Committee spearheads the development of scientific content by identifying novel session themes, chairs, and speakers, and overseeing abstract review and selection.

Co-Chairs:

- Darren R. Brenner, PhD
Professor, Departments of Oncology and Community Health Sciences, Arnie Charbonneau Cancer Institute, Cumming School of Medicine, University of Calgary
- Spencer B. Gibson, PhD
Dianna and Irving Kipnes Endowed Chair in Lymphatic Disorders, Professor, Department of Oncology, Faculty of Medicine and Dentistry, Cancer Research Institute of Northern Alberta, University of Alberta, and Adjunct Senior Scientist, Paul Albrechtsen Research Institute, CancerCare Manitoba

Members:

- Touati Benoukraf, PhD, Memorial University of Newfoundland
- Jennifer Brooks, PhD, University of Toronto
- M. Dean Chamberlain, PhD, University of Saskatchewan
- Jennifer Chan, MD, University of Calgary
- Adrienne Co-Dyre, Member, PIP Working Committee
- John Corriveau, Member, PIP Working Committee
- Stephanie Grover, MSc, CCRP, PMP, ACCESS
- Bishal Gyawali, MD, PhD, Queen's University
- Angeline Letendre, RN, PhD, Co-Chair, First Nations, Inuit and Métis Working Group
- Madeline Li, MD, PhD, Princess Margaret Cancer Centre - University Health Network; University of Toronto

- Kiven Erique Lukong, PhD, University of Saskatchewan
- Rebecca Mercer, PhD, Canadian Centre for Applied Research in Cancer Control (ARCC)
- Hermann Nabi, PhD, HDR, Centre de recherche du CHU de Québec-Université Laval; Université Laval
- Hanne Ostergaard, PhD, University of Alberta
- Joel Pearson, PhD, University of Manitoba
- Christian Steidl, MD, PhD, BC Cancer
- Robin Urquhart, PhD, Dalhousie University
- Josie Ursini-Siegel, PhD, McGill University
- Linda Watson, PhD, Alberta Health Services

First Nations, Inuit and Métis Working Group

This group promotes and strengthens First Nations, Inuit and Métis participation in cancer research and provides advice on integrating culture, participation of First Nations, Inuit and Métis partners and involving Elders, knowledge keepers, patients, families and traditional healers.

Co-chairs:

- Angeline Letendre, RN, PhD
Interim Chair of the Indigenous Cancer Research Network
- Judy Inugjuaq Clark
Inuit Community Health Advisor, Canadian Partnership Against Cancer

Members:

- Geela Amarudjuak, Youth Representative and Advisor
- Lea Bill, RN, First Nations Information Governance Centre
- Levinia Brown, Elder, Former Member of the Legislative Assembly of Nunavut
- Lois Edge, PhD, Athabasca University, MacEwan University, Yorkville University
- Kimiora Henare, PhD, University of Auckland, He Akoranga Whakahoungia
- Peter Hutchinson, PhD, University of British Columbia
- KD King, RN, PhD, Alberta Health Services, MacEwan University, University of Alberta
- Cindy Peltier, PhD, Nipissing University

PIP Working Committee

The PIP Working Committee provides direction on the PIP program format, process and materials and oversees the implementation of the 2025 PIP Program.

Co-Chair

- Rosilene Kraft, PhD

Members:

- Adrienne Co-Dyre
- John Corriveau
- Chantale Thurston

CCRA AWARDS

Congratulations to the 2025 awardees!



Sitansisk Wolastoqey (St. Mary's First Nation) is the recipient of the inaugural award for **Excellence in a First Nations, Inuit and Métis Community Project** for the "Radiant Spirits: Indigenous Mammogram and Breast Health Initiative," launched in October 2024, which has improved breast screening access for Indigenous women in the Sitansisk Wolastoqey. This initiative is rooted in Indigenous leadership and community engagement, laying the foundation for future, sustainable programming focused on equity and cultural safety in cancer care. Sherry Parsons, Community Health Coordinator at the St. Mary's Veterans Memorial Health Center, will receive this award on behalf of Sitansisk Wolastoqey.



Dr. Christine M. Friedenreich, PhD, FCAHS, FRSC, Adjunct Professor and Lead, Academic Research and Education, Preventive Oncology, Departments of Oncology, Community Health Sciences, Cumming School of Medicine, University of Calgary, is the recipient of the **Philip E. Branton Exceptional Leadership in Cancer Research award** for the transformative and international impact of her research on the role of physical activity in the fields of cancer prevention and survivorship which has informed national and international public health guidelines, policies and initiatives, and her pivotal role in championing equity and diversity in the cancer research workforce.



Dr. Nada Jabado, OC, MD, PhD, Senior Scientist in the Child Health and Human Development Program at the Centre for Translational Biology, Research Institute of the McGill University Health Centre, and Professor in the Department of Pediatrics, Faculty of Medicine and Health Sciences at McGill University, has been awarded the **Outstanding Achievements in Cancer Research award**. She is recognized for her groundbreaking discovery of regulatory histone mutations as a fundamental cancer hallmark and her paradigm-shifting finding that brain tumours arise from stalled development in embryonic neural hierarchies—work that has transformed our understanding of pediatric and young adult brain tumours and opened new avenues for diagnosis and treatment.



Dr. Lana Ray, PhD, Associate Professor and Canada Research Chair in Resurgent Methodologies for Indigenous Health, Health Disciplines, Athabasca University, Co-Director, Anishinaabe Kendaasiwin Institute (AKI), and Adjunct Faculty Member, Lakehead University, is the recipient of the inaugural **Excellence in First Nations, Inuit and Métis Cancer Research award** for her work to address significant gaps in Indigenous health research including implementation of Traditional Healing for the prevention and treatment of non-communicable diseases, the inadequate engagement of health research with land and settler colonialism, and the urgent need for Indigenous-led governance and data management solutions.



Dr. Sevtap Savas, PhD, Professor, Human Genetics and Oncology, Division of Biomedical Sciences, Faculty of Medicine, Memorial University, is the recipient of the **Exceptional Leadership in Patient Involvement in Cancer Research award** for the critical role she has played in the development and growth of the Newfoundland and Labrador Public Interest Group on Cancer Research and the Atlantic Cancer Consortium Patient Advisory Committee and her commitment to the inclusion and capacity-building of people with lived and living experience from equity-deserving communities as patient partners in cancer research.



Dr. Barbara C. Vanderhyden, PhD, Senior Scientist, Cancer Research, Ottawa Hospital Research Institute, Corinne Boyer Chair in Ovarian Cancer Research, University of Ottawa and Distinguished Professor, Cellular and Molecular Medicine, University of Ottawa, is the recipient of **Distinguished Service to Cancer Research award** for her decades-long dedication to public engagement, ensuring that scientific advancements reach patients, families, and communities and her pioneering work developing and championing novel and inclusive science promotion and education programs for elementary, high school and university students, building science literacy and inspiring Canada's next generation of scientists.

PIP PARTICIPANTS

Since 2017, the CCRA has offered the Patient Involvement in Cancer Research Program (PIP) as part of the biennial Canadian Cancer Research Conference (CCRC). PIP provides patient partners with an opportunity to learn about leading-edge science from Canada's cancer researchers and trainees and to, likewise, offer the scientific community an opportunity to learn from and interact with patient partners keen on building their knowledge of cancer research and demonstrating the value that engaged patients can bring to the cancer research process. This year's participants are:

- | | | | |
|--------------------|-----------------------|----------------------|----------------------|
| • Randy Baldwin | • Kirsten Efremov | • Cara MacInnis, PhD | • Eddy Szczerbinski |
| • Adrienne Co-Dyre | • Justin Gaudet | • Sherry Metcalfe | • Valentine Thompson |
| • Jennifer Coish | • Lucy Ioannoni | • Katharine Palmer | • Chantale Thurston |
| • John Corriveau | • Suad Ismail | • Darrin Park | • Robyn Wood |
| • Howard Dellar | • Rosilene Kraft, PhD | • Megan Quintal | |
| • Alyssa Dickey | • Natalie Kwadrans | • Megan Sewell | |
| • Sandra Dudych | • Camille Leahy | • Sundas Shamshad | |

Early career researchers supporting PIP participants as science partners:

A special thank you to Scott McComb, PhD, National Research Council Canada, University of Ottawa and Joel Pearson, PhD, University of Manitoba for providing pre-webinars to PIP participants.



EXHIBITORS

We encourage you to visit our 2025 CCRC Exhibitors to find out more about what they offer to the research and patient partner communities. This year’s exhibitors are:

 Arnie Charbonneau Cancer Institute	 	DESC
 Canadian Cancer Society	Société canadienne du cancer	DESC
 CIHR IRSC	Institute of Cancer Research Institut du cancer	DESC
		DESC
 OICR Ontario Institute for Cancer Research		DESC
 INSTITUT DE RECHERCHE TERRY FOX RESEARCH INSTITUTE		DESC
		DESC

DETAILED SCIENTIFIC PROGRAM

**Friday, October 31,
2025**

7:30 am – 4:00 pm
Telus Room 103



CIHR Institute of Cancer Research Advisory Board Meeting (Closed)

4:00 pm – 5:00 pm
Telus Co-Lab



PIP Meet and Greet (Closed)

5:30 pm – 8:30 pm
Off-site



CIHR Institute of Cancer Research Institute ECR-PIP Networking Meeting (Closed)

**Saturday,
November 1, 2025**

7:30 am – 6:15 pm
Hyatt Stephen AB



CIHR Institute of Cancer Research Early Career Researcher (ECR) Meeting (Closed)

8:00 am – 4:30 pm
Telus 104-105, 103



**Canadian Indigenous Nurses' Association and Indigenous Cancer Research Network Meeting
(By invitation)**

10:00 am – 3:00 pm
Telus Co-Lab



PIP Program (Closed)

A- 11:00 am – 1:00 pm
B – 12:00 – 1:00 pm
C - 1:00 – 2:00 pm
D - 2:00 – 3:00 pm
E - 3:00 – 4:00 pm
F - 4:00 – 5:00 pm



Tours of the Arthur J.E. Child Comprehensive Cancer Centre

Pre-registration required. Registrants must meet 10 minutes before departure times in the lobby of the Hyatt Regency Hotel for the shuttle service.

Provided by the Alberta Cancer Foundation, this tour will highlight the unique features of this new and largest cancer treatment and research facility in Canada and the second largest in North America.

Following engagement of hundreds of patients, family advisors, physicians, design and contracting partners, the Arthur J.E. Child Comprehensive Cancer Centre is a state-of-the-art facility that includes both inpatient and outpatient services, and fosters community and connection among patients, their support groups, and services. Research across the spectrum is integrated to further optimize care, with a focus on prevention, early detection, precision medicine and psychosocial care.

More about the centre is here: <https://www.albertahealthservices.ca/ajec/page15399.aspx>. More about the Alberta Cancer Foundation is here: <https://albertacancer.ca/>.

Saturday, November 1, 2025

1:00 am – 4:30 pm
*Arthur J.E. Child
Comprehensive Cancer
Centre*

Introduction to Machine Learning - WORKSHOP

Pre-registration required.

Hosted by Precision Analytics, Cancer Advanced Analytics, Cancer Research & Analytics, Cancer Care Alberta, this workshop provides an introductory overview of machine learning for participants with a foundational understanding of data analysis, but no prior experience with machine learning. It is designed for individuals seeking to build conceptual knowledge of machine learning and understand its role in applied and research contexts.

The session will introduce key concepts in machine learning, including how it differs from traditional statistical approaches, how models learn from data, and the basic types of learning. Participants will also be introduced to fundamental ideas related to evaluating model performance, identifying common pitfalls, and recognizing the importance of ethical considerations and bias in real-world applications.

Instructors:

- Cheliger Cheliger, PhD
- Kenneth Lai, PhD
- Maeve Wickham, PhD
- Ali Manouchehrinia, PhD
- Grace Heemeryck
- Emily Walker, PhD

6:00 – 7:30 pm
*Telus Macleod Pre-
Function*



Canadian Cancer Society
Société canadienne du cancer

Reimagining Cancer Clinical Trials and Prevention: Strategies to Improve Access and Inclusion

Pre-registration required.

Hosted by the Cancer Prevention Research Network (CPRN), an initiative of the Canadian Cancer Society (CCS), this is an evening of connection, insight, and collaboration focused on the future on improving access to cancer related clinical trials in Canada. Light refreshments will be provided.

What to Expect:

- CCS leadership and a lead cancer prevention researcher will give opening remarks and discuss CCS's evolving role in cancer clinical trials
- An interactive roundtable activity designed to spark discussion and gather diverse perspectives on improving access to and awareness of clinical trials. Participants will have the opportunity to share insights, experiences, and ideas in a collaborative setting.
- Open networking to connect with others passionate about advancing cancer prevention research and clinical trials

**Sunday, November
2, 2025**

7:45 – 10:00 am
Telus Macleod Hall

Opening Ceremony

Co-Chairs:

- Dajan O'Donnell, PhD, Chair, CCRA Advisory Board
- Craig Earle, MD, MSc, FRCPC, CEO, Canadian Partnership Against Cancer

Elders Opening

Committee Introductions and Acknowledgements

Awards presented to:

- Sherry Parsons for the Sitansisk Wolastoqey (St. Mary's First Nation)
- Dr. Christine M. Friedenreich
- Dr. Nada Jabado
- Dr. Lana Ray
- Dr. Sevtap Savas
- Dr. Barbara Vanderhyden

10:00 – 10:30 am
*Telus Macleod Pre-
function*

BREAK with Drummer from

10:30 am – Noon
Telus Macleod Hall

Plenary 1: Immune System and Cancer: What's next on the horizon?

Co-chairs:

- Hanne Ostergaard, PhD, University of Alberta
- Rosilene Kraft, PhD, Research Advocate

Presenters:

- Barbara Vanderhyden, PhD, Ottawa Hospital Research Institute, University of Ottawa
TBD
- Donna Senger, PhD, McGill University – Lady Davis Institute

Harnessing the Power of Macrophage for Cancer Therapy

- Brad Nelson, PhD, BC Cancer, University of British Columbia
TBD

Noon – 1:15 pm
*Telus Exhibit Hall
(C/D/E)*

LUNCH

12:15 – 12:45 pm
Telus Exhibit Pre-
function



Canadian Cancer Society
Société canadienne
du cancer

Tech Talk: Canada's Lung Cancer Action Plan

[Add description](#)

12:15 – 1:15 pm
Hyatt Doll/Herald



RRcancer's Quebec General Assembly

Closed to RRCancer Members

12:15 – 1:15 pm
Walker/Bannerman



Care for First Nations, Inuit and Metis Children with Cancer - Workshop

Pre-registration required.

In this 60-minute workshop, we will facilitate a community-engaged discussion to gather the most pressing priorities in the care and wellbeing for First Nations, Inuit and Métis (FNIM) children, families and communities affected by childhood cancer and begin to formulate an approach to addressing these issues.

We will centre the discussion through the story of one family's cancer journey. Background information about what is known about outcomes and experiences among FNIM children with cancer in Canada will be shared with the participants as well as information about what data sources are available for further work. From here, we will gather the thoughts of the participants and identify themes that emerge, which may include research priorities, responsible data governance and data sharing, consent considerations for FNIM children and youth, as well as protocols and principles of engagement with FNIM communities. We will summarize the discussion verbally with participants and use a visual format for knowledge sharing.

Presenters:

- The ACCESS Indigenous Research Circle: Stacey Marjerrison, Wendy Lariviere, Alexandra King, Malcolm King, Angeline Letendre, Cindy Peltier, Amanda Sheppard and Vicky Wilton.

1:15 - 1:45 pm
Telus Macleod Hall

Presentation – Dr. Paul Hebert, President, CIHR

[TBD - TITLE – description](#)

1:45 – 2:15 pm
Telus Macleod Hall

Keynote Presentation – Professor Gail Garvey (AM), The University of Queensland

[TBD - TITLE – description](#)

2:15 – 2:30 pm

Transition to Hyatt

2:30 – 4:00 pm
Hyatt Imperial 4/6

Concurrent A1: Drug Discovery, Design, Design and Resistance

Co-Chairs:

- Dean Chamberlain, PhD, University of Saskatchewan
- Megan Quintal, Research Advocate

Presenters:

- Mohsen Akbari, University of Victoria
A drug-eluting injectable nanogel for localized delivery of anticancer drugs to solid tumors
- Miffy Hok Yan Cheng, PhD, University of British Columbia
Lipid nanoparticles for cancer diagnostics and therapeutics
- Melissa Loeffen, University of Toronto
Novel perfluorocarbon nanoemulsions for photodynamic therapy of lung cancer
- Pooja Praveen Kumar, University of Alberta
Preclinical 3D Model Drug Repurposing Screen Identifies Digoxin as an Effective Anti-cancer Therapy for SWI/SNF-inactivated Endometrial and Ovarian Cancers

2:30 – 4:00 pm
Hyatt Imperial 1/2/3

Concurrent A2: Immunotherapy

Co-Chairs:

- Christian Steidl, MD, PhD, BC Cancer, University of British Columbia
- Camille Leahy, Research Advocate

Presenters:

- David Jung, University of Calgary
Inactivation of TRAF3 and CYLD Causes Resistance to T-Cell Based Therapies in Multiple Myeloma by Promoting an Immunosuppressive Microenvironment that Alters T Cell Function
- Larisa Kovtonyuk, University of Calgary
Determining the role of the microbiome and microbial metabolites in enhancing the efficacy of CD19 directed CAR-T cell therapy of B cell malignancies
- Yale Michaels, PhD, University of Manitoba
Harnessing stem cells as a scalable and cost-effective source of T cells for off-the-shelf immunotherapy
- Leanne Palichuk, University of Calgary
Using double-negative T cells to enhance the innate like anti-leukemia activity of CD8+ T cells against relapsed acute myeloid leukemia

2:30 – 4:00 pm
Hyatt Imperial 5/7/9

Concurrent A3: Pediatric Cancer Across the Patient Journey

Co-Chairs:

- Stephanie Grover, ACCESS
- Kirsten Efremov, Research Advocate

Presenters:

- Fawzi Aoudjit, Université Laval
Alpha2 integrin mediates chemoresistance in human acute T cell lymphoblastic leukemia
- Nadine Azzam, CHEO Research Institute
A National Pediatric Preclinical Modelling Program to Advance Precision Oncology for Childhood Cancers in Canada
- Ekaterini Damoulianos, McGill University
How Children Want to Know: Identifying Knowledge Dissemination Preferences in Pediatric Oncology
- Rebecca Deyell, MD, MHSc, BC Children's Hospital
Advancing Equitable Access to Pediatric Oncology Trials: Applying the Canadian Remote Access Framework for Clinical Trials (CRAFT) at BC Children's Hospital
- Tona Pitt, University of Calgary
Geographic access to pediatric cancer centers in Canada

2:30 – 4:00 pm
Hyatt Imperial 8

Concurrent A4: Patient-Centred Research/Patient Engagement

Co-Chairs:

- Linda Watson, PhD, Alberta Health Services, University of Calgary
- Darrin Park, Research Advocate

Presenters:

- Manuel Ester, University of Calgary
Patient perspectives of screening brief intervention and referral for cancer-related lifestyle risk factors across healthcare settings
- Preet Kang, University of British Columbia
Experiences of Partners of Patients diagnosed with Cancer: A Systematic Review and Thematic Synthesis of Qualitative Literature
- Rosilene Kraft, PhD and Katharine Palmer, MOHCCN Patient Working Group
Patient Voices in Research: A patient-centred and patient-driven research funding initiative from the Marathon of Hope Cancer Centres Network (MOHCCN)
- Georgia Skardasi, MSc, Memorial University of Newfoundland
Goals, accomplishments, and future plans of the Atlantic Cancer Consortium Patient Advisory Committee (ACC PAC)
- Kednapa Thavorn, Ottawa Hospital Research Institute
Meaningful Patient Engagement in Economic Evaluations of Cancer Care: Are We There Yet?

2:30 – 4:00 pm
Hyatt Doll/Herald

Concurrent A5: Health Equity

Co-Chairs:

- Robin Urquhart, PhD, Dalhousie University
- Sundas Shamshad, Research Advocate

Presenters:

- Anna Pujadas Botey, Alberta Health Services
Co-developing cancer research priorities with underserved communities: A patient-oriented health equity workshop in Alberta
- Zhimeng Jia, University of Toronto
A qualitative study of Chinese immigrant families' experience with inpatient palliative care specialists
- Jagbir Kaur, BC Cancer
Planning and Co-Creating an Equity-Oriented Model of Care: Baseline Findings & Lessons Learned
- Mika Rathwell, MA, University of Saskatchewan
Closing the Gap: Understanding and addressing sub-regional HPV immunization inequities in Canada
- Morgan Stirling, University of Manitoba
Exploring barriers and priorities for including Trans & Gender Diverse people in Canadian cancer health services research

2:30 – 4:00 pm
Stephen AB

Concurrent A6: Indigenous Knowledge and Methodologies in Cancer Research

Co-Chairs:

- KD King, RN, PhD, Alberta Health Services, MacEwan University, University of Alberta
- Justin Gaudet, CAO, Paddle Prairie Métis Settlement and Research Advocate

Presenters:

- Andrea Aiabens, First Nations Health Managers Association (FNHMA)
Pathways to Building Cancer Education for First Nations Health Leaders
 - Amanda Andrew, Otipemisiwak Métis Government
-

Learning Through Evaluation: Insights from Culturally Grounded Tobacco Reduction Programs for Métis Albertans

- Lea Bill, Alberta First Nations Information Governance Center
Applied First Nations Knowledge and Practice of Collaborative Processes: Recognizing multiple bodies of knowledge through orality to inform Practice Change within cancer care settings
- Carol Crowe, EP, Indigenous Visions Inc.
Integrating Traditional Knowledge and Western Science: Advancing Cancer Prevention in Indigenous Communities
- Peter Hutchinson, PhD, University of British Columbia
Indigenous Cancer Research in Canada

2:30 – 4:00 pm
Walker/Bannerman



Canadian Cancer Society
Société canadienne du cancer

Introduction to the Oncology-focused Startups with the Creative Destruction Lab
WORKSHOP

Pre-registration required.

This interactive workshop introduces clinicians and researchers to the exciting world of oncology-focused startups through the lens of the Creative Destruction Lab (CDL), a global objectives-based mentorship program for massively scalable, science-based ventures. Participants will explore the fundamentals of research commercialization, learning how their clinical expertise and research can be translated into impactful startups that accelerate innovation in cancer care.

Presenters:

- Mathew Platt, PhD, Director of Community & Cancer Stream Lead, Creative Destruction Lab
- CDL Alumni Founders

For more information on the CDL Cancer program and relevant resources, please visit:

<https://creativedestructionlab.com/streams/health/cancer/>.

4:00 – 4:30 pm
Hyatt Grand Foyer 3

BREAK

4:30 – 5:05 pm
Imperial 4/6

Lightning A1: Blood Cancers

Chair: Stephanie Xie, PhD, Princess Margaret Cancer Centre, University of Toronto

Presenters:

- Havva Afshari, University of Manitoba
Determining kinase activation states in chronic lymphocytic leukemia (CLL) through multiplexed targeted mass spectrometry
- Salman Basrai, Ontario Institute for Cancer Research
Blood-based epigenetic instability linked to cancer, aging, and cardiovascular disease
- Angela Hamie, University of Alberta
Development of a Lipid Nanoparticle based Anti-BCMA CAR-NK Therapy for Multiple Myeloma
- Noemie Leblay, University of Calgary
Single cell profiling of PR subclones defines high-risk disease in multiple myeloma
- Sarah St-Amand, Université de Montréal
Identifying new metabolic vulnerabilities in CBFA2T3::GLIS2+ acute megakaryoblastic leukemia
- Ami (T.T.Chau) Truong, University of British Columbia

4:30 – 5:05 pm
Hyatt Imperial 1/2/3

Lightning A2: Brain Tumours

Chair: Rhonda Lun, MD, MSc, FRCPC, University of Calgary

Presenters:

- Samir Assaf, University of Calgary
Interplay between DOT1L and the Mediator complex regulates glioblastoma stem cell growth
- Kyle Heemskerk, University of Calgary
The proteasome activator, PA28ab, interacts with KIF11 to promote stemness and therapeutic resistance in glioblastoma
- Ryan Mota, University of Manitoba
D-serine facilitates aggressive migration and stemness of recurrent glioblastoma cells by interacting with host endothelial cells
- Tala-Maria Mouannes, McGill University
Dual functions of IL-33 orchestrate tumour-associated macrophages in glioblastoma
- Mallak Salla, University of Alberta
Understanding the Interaction Between Macrophages and Tumor Cells in the Brain Tumor Microenvironment to Enhance Anti-Tumor Immune Responses
- Shannon Snelling, University of Calgary
Chimeric antigen receptor macrophages (CAR-M) sensitize glioblastoma models to temozolomide and immune checkpoint blockade combination therapy

4:30 – 5:05 pm
Hyatt Imperial 5/7/9

Lightning A3: Breast Cancer

Chair: Elena Kuzmin, PhD, Concordia University, McGill University

Presenters:

- Stephanie Ali Fairbairn, McMaster University
Exploring Kaiso's role in Androgen Receptor expression in triple-negative breast cancer
- Bahareh Heidari, Université de Montréal – IRIC
Investigation of IDH2 inhibition-associated vulnerabilities in triple negative breast cancer cells
- Kevin Linn, University of British Columbia
Breast Cancer System Performance: Wait Times, Stage at Diagnosis, and Survival Rates for First Nations and All Other Women in BC
- Marie-Ève Proulx, McGill University
CD13 Loss Disrupts Tissue Architecture to Promote Cancer Progression
- Katherine Rich, University of British Columbia
Mast cells as biomarkers for capecitabine benefit in triple negative breast cancer
- Anaïs Vivet, Université de Montréal - IRIC
ER+ signaling in breast cancer: KO by SUMOs?

4:30 – 5:05 pm
Hyatt Imperial 8

Lightning A4: Colorectal Cancer

Chair: Vikas Garg, MD, DM, Windsor Regional Hospital Cancer Centre, Western University

Presenters:

- Angie Chen, University of Alberta
Effect of mtDNA and gDNA on Immune Cell Activation in Colorectal Cancer Subtypes
- Vicki Cheng, University of British Columbia
Incidence and Mortality Impact of New-Onset Depression Among Patients with Colorectal Cancer: A Population-Based Cohort Study

- Julian Chua, University of Calgary
NOTUM Depletion Restores CD8+ T Cell-Mediated Removal of Colorectal Cancer Cells
- Liam Fitzgerald, University of Calgary
Development of a blood-based colorectal cancer screening test using targeted metabolomics
- Shuo Ren, McGill University
Systemic CD4+-Dominant Immune Response Following Liver Resection in Patients with Colorectal Cancer Liver Metastases
- Anastasia Tsatoumas, McGill University
TGF- β Inhibition as a Strategy to Target Vessel Co-option and Immune Evasion in Colorectal Cancer Liver Metastases

4:30 – 5:05 pm
Hyatt Doll/Herald

Lightning A5: Lung Cancer

Chair: Lisa YW Tang, PhD, University of British Columbia

Presenters:

- Liton Devnath, BC Cancer
AI for Predicting Pembrolizumab Monotherapy Response in High PDL1 Advanced NSCLC
- Arnaud Driussi, Université Laval
Characterization of the tumor microenvironment in pulmonary adenocarcinoma: a new insight into the biology of Spread Through the Alveolar Space
- Melis Erkan, Dalhousie University
Unveiling Molecular Signatures of Arsenic-Induced Lung Damage: A Multi-Omics Approach Using Lung Models and Human Tissues
- Siddhartha Goutam, University of Calgary
Translating Trials to Practice: A Real World Analysis of Effectiveness and Safety of Neoadjuvant Chemoimmunotherapy in Resectable Non-Small Cell Lung Cancer
- Jana Jajarmi, BC Cancer
Identifying Novel Modifiers of EGFR Induced Tumourigenesis
- Rocky Shi, BC Cancer
Drug tolerance and persistence to EGFR inhibitor treatment are mediated by an ILK-SFK-YAP signaling axis in lung adenocarcinoma

4:30 – 5:05 pm
Stephen AB



Société de recherche
sur le cancer
Cancer Research Society



**OVARIAN
CANCER**
CANADA

Lightning A6: Ovarian Cancer

Chair: Shuk On (Annie) Leung, MD, FRCSC, FACOG, McGill University Health Centre

Presenters:

- Breanne Bevelander, University of Saskatchewan
Revolutionizing Ovarian Cancer Research: Unveiling the Power of 3D Microtissues
- Mandana Bigdeli, Centre de recherche du Centre hospitalier de l'Université de Montréal (CRCHUM)
Exploiting Multidimensional Synthetic Lethalities to Overcome PARPi Resistance in Ovarian Cancer
- Jeanie Malone, BC Cancer
Towards in vivo optical fallopian imaging for tubo-ovarian cancer detection
- Sarah Nersesian, Ottawa Hospital Research Institute
Epitype-immune interactions in high-grade serous ovarian cancer

- Sabrina Ritch, Centre de recherche du Centre hospitalier de l'Université de Montréal (CRCHUM)
Combining novel Ran GTPase inhibitors with PARP inhibitors as a therapeutic strategy in ovarian cancer
- Alicia Tone, PhD, Ovarian Cancer Canada
Driving innovation in ovarian cancer survivorship research through national patient and caregiver engagement: an Ovarian Cancer Canada and Cancer Research Society joint initiative

4:30 – 5:05 pm
Walker/Bannerman

Lighting A7: Prostate Cancer

Chair: Nicolette Fonesca, PhD, University of Victoria

Presenters:

- Maëlle Cottin, Centre de recherche du Centre hospitalier de l'Université de Montréal (CRCHUM)
Harnessing a marine worm hemoglobin potential to enhance tumor biobanks preservation and 3D living avatars viability for personalized cancer research
- Lingwei (Stephanie) Han, McGill University
Investigating the role of CHD4 in prostate cancer
- Ariane Lapointe-Belleau, Centre hospitalier universitaire de Québec-Université Laval
Androgenic Effects of 11-oxyandrogens in Castration-Resistant Prostate Cancer
- Lucie Leclair, Université Laval
Impact of MAG-EPA supplementation on the prostate tumor microenvironment
- Samira Rahimirad, McGill University
Rising Circulating Cell-Free Tumour DNA During the Trajectory of Prostate Cancer Patients Reveals Genomic Alterations Related to Progression
- Unnati Yagnik, University of British Columbia
The Discovery of Novel Neuroendocrine Prostate Cancer Biomarkers Utilizing a Proteomic Approach

4:30 – 5:30 pm
Telus Exhibit Pre-function



Knowledge Product Presentations

DESC

5:00 – 5:15 pm

Transition to Telus Exhibit Hall (C/D/E)

5:15 – 6:15 pm
Telus Exhibit Hall
(C/D/E)



Poster Session 1 & Exhibits

This poster session features a broad range of research topics. Explore the exhibit hall and meet with researchers and trainees to hear about their research and our exhibitors to learn more about their organizations.

6:00 – 7:00 pm
Hyatt
Walker/Bannerman



RRCancer Networking Event

Pre-registration required

This networking event is for fellow associate and student members of the FRQ Cancer Research Network (RRCancer) from across Quebec. Attendees will have the opportunity to share research interests, foster potential collaborations, and discuss patient involvement in cancer research.

7:00 – 8:15 pm
Telus Macleod Hall

Imagine...

Reshaping adolescent & young adult cancer care
through immersive experience.



anew

Reshaping young adult cancer care, together.

Film Screening and Panel Discussion

Open to all delegates

A Special Screening and Panel Discussion with members of the AYA co-development team and researchers supporting this creative and powerful immersive performance. Please join us as we share this experience and learn from the AYAs, researchers and clinicians who experienced Imagine... and are seeing tangible changes in AYA cancer care.

Imagine... was developed by a talented team of 10 AYA co-researchers each with lived experience of cancer and all committed to improving care and support for those who follow. They worked together with the Anew Research Collaborative, a participatory research team based at Royal Roads University in Victoria, BC. The group met virtually and in-person over 11 months in 2024 to co-create, devise and produce this immersive experience giving a felt-sense of what it's truly like to navigate cancer as an AYA. Imagine... debuted to capacity audiences at the BC Cancer Summit, November 2024 in Vancouver, where over 100 clinicians, care providers and researchers participated one of twelve 40-minute performances gaining insight into the unique challenges of AYA cancer care and support and reflecting on how they can improve the care and support they provide.

**Monday, November
3, 2025**

8:00 – 9:30 am
Telus Macleod Hall

Plenary 2: BIG data in cancer research: Too BIG to fail?

Co-chairs:

- Spencer B. Gibson, PhD, University of Alberta
- Adrienne Co-Dyre, Research Advocate

Presenters:

- Nada Jabado, OC, MD, PhD, McGill University Health Centre, McGill University
TBD
- Marco Marra, OC, OBC, PhD, FRS(C), FCAHS, LLD (hon), DSc (hon), BC Cancer, University of British Columbia
TBD
- Craig C. Earle, MD, MSc, FRCPC, Canadian Partnership Against Cancer
[Too Small to Succeed: Building Big Cancer Data, Together](#)

9:30 – 10:00 am
Hyatt Grand Foyer 3

BREAK

9:30 am



Storytelling Circle

DESC

10:00 – 11:30 am
Imperial 4/6

Concurrent B1: Molecular and Cellular Biology

Co-chairs:

- Erique Lukong, PhD, University of Saskatchewan
- Cara MacInnis, PhD, Research Advocate

Presenters:

- Housheng Hansen He Princess Margaret Cancer Centre, University of Toronto
[Transcriptional and functional landscape of circular RNA in Cancer](#)
- Laura Hulea, Université de Montréal
[Targeting resistance to cancer therapy through translational control of metabolism](#)
- Zhaoping Ju, McGill University
[Role of Hippo Signaling Effectors Yap & Taz in Gastric Metaplasia and Carcinogenesis](#)
- Yilin Wang, McGill University
[G0S2 Protein Regulates Colon Inflammation and Colorectal Cancer Through Production of Branched-chain Fatty Acids](#)

10:00 – 11:30 am
Imperial 1/2/3

Concurrent B2: Clinical Research and Trials

Co-chairs:

- Pierre-Olivier Gaudreau, MD, PhD, MPs, FRCPC, Cancer Centre of Southwestern Ontario, Queen's University
- Jennifer Coish, Research Advocate

Presenters:

- Anne Gangloff, Université Laval
[Lipid metabolism reprogramming in the Safety cohort of the CHLOE pancreas trial: Cholesterol blockade in metastatic pancreatic cancer NCT04862260](#)
- Kevin Hay, MD, MSc, FRCPC, University of Calgary
[Building the Canadian-Led Immunotherapies in Cancer \(CLIC\) Network: Impact, Opportunities, and Lessons Learned](#)
- Fatima Nadeem, University of Western Ontario
[Standard Chemo-Immunotherapy versus Real-World Protocols: Evaluating Outcomes in Triple-Negative Breast Cancer Neoadjuvant chemo/immunotherapy](#)
- Judy Needham, Canadian Cancer Clinical Trials Network (3CTN)
[Development of Patient Priorities in Cancer Research](#)



**SINCLAIR CANCER
RESEARCH INSTITUTE**

Concurrent B3: Patient Experience

Co-chairs:

- Andrew Craig, PhD, Sinclair Cancer Research Institute, Queen's University
- Eddy Szczerbinski, Research Advocate

Presenters:

- Patricia Biondo, University of Calgary
Five years of a province-wide Compassionate Communities initiative: impact on public awareness of palliative care and advance care planning
- Vicki Cheng, University of British Columbia
Examining mental health care utilization in individuals with colorectal cancer: population-based cohort studies
- Rebecca Hansford, Queen's University
The experience of breast cancer treatment among adults with intellectual or developmental disabilities: A convergent mixed methods study
- Monica Iliescu Nelea, PhD, Centre hospitalier de l'Université de Montréal (CHUM)
Mise à l'échelle du programme PAROLE-Onco au Québec : le rôle central d'une communauté de pratique interétablissements

Concurrent B4: Screening

Co-chairs:

- Marc Gunter, PhD, Imperial College London
- Lucy Ioannoni, Research Advocate

Presenters:

- David Busolo, University of New Brunswick
Strategies to improve access to mammograms: A qualitative study with social service providers in New Brunswick
- Nadine Caron, MD, MPH, FACS, FRCSC, University of British Columbia
An Assessment of British Columbia's Cancer Screening Programs for First Nations People Living in the Province
- Maryam Darvishian, University of British Columbia
Breast cancer screening engagement among women with different ethnic backgrounds in Canada: Evidence from the Canadian Partnership for Tomorrow's Health
- Rafael Meza Rodriguez, BC Cancer
Projected Impact of Lung Cancer Screening on Health Outcomes and Healthcare Resources in Canada

Concurrent B5: Health Economics/Outcomes Research

Co-chairs:

- Rebecca Mercer, PhD, Canadian Centre for Applied Research in Cancer Control (ARCC)
- Katharine Palmer, Research Advocate

Presenters:

- Philip Akude, University of Calgary
The PaCES Study: Cost effectiveness of an early palliative care intervention in patients with advanced colorectal cancer
- Patience Nishimagizwe, Dalhousie University
Examining the association between breast cancer treatments and self-reported sexual dysfunction in Canadian women: A population-based cross-sectional study
- Diego Sanchez, BC Cancer
Cost-Effectiveness Analysis of First-Line Tumour Tissue Profiling to Guide Targeted Therapy in Metastatic Pancreatic Ductal Adenocarcinoma: A Canadian Public Health Payer's Perspective
- Mona Shafey, MD, FRCPC, Alberta Health Services, University of Calgary
Policy Brief: Enhancing Access to CAR T in the Canadian Healthcare System

10:00 – 11:30 am
Stephen AB

Concurrent B6: Indigenous Cancer Care Across the Continuum

Co-chairs:

- Angeline Letendre, RN, PhD, Indigenous Cancer Research Network
- Sherry Metcalfe, Research Advocate

Presenters:

- Felicia Adelaja and Jemimah Thomas, Tungasuvvingat Inuit
Storytelling: An Inuit-Led Narrative Approach to Cancer Prevention and Wellness
- Laura McNab-Coombs, BC Cancer
Indigenous Cultural Safety in Clinical Trials: Realities, Relationships, and Recommendations
- Ria Patel, University of Western Ontario
Developing the Métis-CTN program: National meeting to co-create a clinical trials navigation pathway for Métis cancer patients
- Nina Scott, Te Whatu Ora Waikato (Health New Zealand)
Cancer Whiri; An Indigenous led model that enhances delivery of cancer care and well-being for Maori, Indigenous peoples of New Zealand
- Liris Smith, Yukon University
Understanding First Nations Ways of Knowing and Doing in Cancer Care in Yukon: Using intergenerational and survivorship models to inform community wellness

10:00 – 11:30 am
Walker/Bannerman



Navigating the Path to Publication

Pre-registration required

This workshop will guide researchers through the fundamentals of high-quality peer review, while also delving into concepts of Open Research, systemic bias in research and peer review and considerations for Community Engaged Research.

Specific topics covered include:

- Fundamental and emerging practices in peer review
- Unconscious bias in research and peer review
- An introduction to Open Research
- Best practices for reporting and reviewing Community Engaged Research
- Maximizing societal impact with your research

Instructor:

- Calvin Chan, PhD, Canadian Science Publishing

11:30 am – 12:45 pm LUNCH
Telus Exhibit Hall
(C/D/E)

11:45 – 12:15 pm
Telus Exhibit Pre-
function



Tech Talk: Beyond the Silos: Uniting Health Data for Real Impact

DESC

11:45 – 12:45 pm
Hyatt Doll/Herald

AYA Research Priorities

DESC

Open to all interested delegates

12:45 – 2:15 pm
Imperial 4/6

Concurrent C1: Tumour Biology, Immunology and the Microenvironment

Co-chairs:

- Joel Pearson, PhD, University of Manitoba
- Suad Ismail, Research Advocate

Presenters:

- Pinaki Bose, University of Calgary
RNFI26 Orchestrates Immune Evasion via Coordinated Regulation of PD-L1 and MHC-I
- Kurt Hildebrand, University of Calgary
High dose radiation therapy promotes immune suppressive macrophage phenotypes, whereas low dose radiation therapy promotes immunogenic macrophage phenotypes in an immune competent murine model of soft tissue sarcoma
- Shyam Menon, McGill University - Lady Davis Institute
Control of brain tumor progression by the dual function cytokine IL-33
- Hanne Ostergaard, University of Alberta
Leupaxin deficiency results in increased differentiation of CD8 T cells into CD8+NK1.1+ T cells and decreased tumor growth

12:45 – 2:15 pm
Imperial 1/2/3

Concurrent C2: Bioinformatics and Precision Medicine

Co-chairs:

- Touati Benoukraf, PhD, Memorial University of Newfoundland
- Randy Baldwin, Research Advocate

Presenters:

- Arielle Elkrief, MD, FRCPC, Centre hospitalier de l'Université de Montréal (CHUM)
Microbiome profiling reveals that fecal microbiota transplantation (FMT) modulates response when combined with immunotherapy in patients with lung cancer and melanoma (FMT-LUMINate, NCT04951583)
- Maximilian Labrecque, University of Calgary
Characterizing the effects of radiation therapy on the genomic landscape of murine models of undifferentiated pleomorphic sarcoma
- Clément Larose, MSc, Centre hospitalier universitaire de Québec-Université Laval

Metabolic syndrome and prostate cancer risk: results from the BIOmarkers of Prostate Cancer/Prevention and Environment (BIOCaPPE) prospective study

- Hadeesha Piyadasa, Stanford University
Multiomic Landscape of Human Gliomas From Diagnosis to Treatment and Recurrence

12:45 – 2:15 pm
Imperial 5/7/9

Concurrent C3: Cross-Pillar Cancer Research Across the Lifespan

Co-chairs:

- Madeline Li, MD, PhD, Princess Margaret Cancer Centre, University of Toronto
- Alyssa Dickey, Research Advocate

Presenters:

- Cheryl Heykoop, PhD, Royal Roads University
Imagine... An Immersive Performance Co-Designed by Adolescents and Young Adults (AYA) with Cancer Offering a Felt Sense of Cancer Care and Support in British Columbia
- Stacey A. Santi, PhD, Health Sciences North Research Institute
Regional comparison of age-stratified incidence rates of colorectal cancer in Ontario: a population-based study across 20 years
- Fay Stroschein, RN, PhD, University of Calgary
Addressing the needs and concerns of older adults facing cancer diagnosis: A comprehensive model of recommendations developed through engagement with older adults, family, and healthcare professionals during co-design of a provincial cancer diagnosis program
- Yiming Wang, MD, PhD, FRCPC, Hospital for Sick Children
Cancer risk stratification at the time of birth: potential roles of newborn screening in diagnosing cancer predisposition syndromes

12:45 – 2:15 pm
Imperial 8

Concurrent C4: Clinical Research and Radiotherapy

Co-chairs:

- Fei-Fei Liu, MD, FRCPC, FASTRO, FCAHS, CIHR ICR, Princess Margaret Cancer Centre, University of Toronto
- Natalie Kwadrans, Research Advocate

Presenters:

- Robert Olson, MD FRCPC MSc, University of British Columbia
Stereotactic Ablative Radiotherapy for up to 5 Oligometastases: Long-Term Outcomes of the Population-Based Phase 2 SABR-5 Clinical Trial
- Candice Poon, University of Calgary
Niacin modulates immune responses in newly diagnosed glioblastoma patients
- Rebecca Xu, Canadian Cancer Clinical Trials Network (3CTN)
3CTN: A Decade of Impact in Advancing Academic Cancer Clinical Trials in Canada
- Atiyah Yahya, University of Alberta
Glutamate and Glutamine (Glx) Measurements in High Grade Glioma in Response to Radiation Therapy: A Magnetic Resonance Spectroscopic Imaging Study at 3 T

12:45 – 2:15 pm
Imperial Doll/Herald

Concurrent C5: Environmental Impacts on Cancer

Co-chairs:

- Ludmil Alexandrov, PhD, University of California San Diego
- Valentine Thompson, Research Advocate

Presenters:

- Parveen Bhatti, PhD, BC Cancer
Wavelength-resolved measures of outdoor artificial light at night and breast cancer risk

- Lindsay Forsman-Phillips, CAREX Canada, University of British Columbia
[Mobilizing sun safety messages in the construction industry](#)
- Vikki Ho, PhD, Université de Montréal
[Lifetime occupational and domestic environmental exposures and breast cancer risk among women in the CARTaGENE study](#)
- Emilia Lim, University of British Columbia
[Investigating the Impact of Environmental Exposures on Lung Cancer Promotion](#)
- Paola A. Marignani, PhD, Dalhousie University
[Environmental Determinants of Cancer Disparities in a Black Canadian Community](#)

12:45 – 2:15 pm
Stephen AB

Concurrent C6: First Nations, Inuit and Métis Cancer Prevention and Screening

Chair:

- Peter Hutchinson, PhD, University of British Columbia

Presenters:

- S. Trevor Baxter, Athabasca University
[Enhancing Alberta Métis Settlements Participation in Cancer Screening: A Distinctions-Based, Community-Grounded Approach](#)
- Barbara Frazer, Alberta First Nations Information Governance Center
[Knowledge into Action: Implementation Testing of Cancer prevention and Screening Practices Grounded in First Nation Knowledge Transfer Practices](#)
- KD (Keith) King, University of Alberta
[Exercising Self-Determination & Governance through Métis Culture, Knowledge & Science Research to Build Youth Capacity to Prevent Cancer](#)
- Angeline Letendre, RN, PhD, Canadian Indigenous Nurses of Canada (CINA)
[Métis Culture, Knowledge & Science as a Framework for Building Youth Capacity to Prevent Cancer: A Métis Settlement Panel Presentation](#)
- Samantha Morris, Lakehead University
[Living Well Together: Integrating Two Perspectives into Cancer Prevention Programming for Indigenous Communities](#)

12:45 – 2:15 pm
Walker/Bannerman



CanPath Synthetic Dataset Workshop – Part 1

Pre-registration required

This hands-on workshop introduces participants to the CanPath Synthetic Dataset, a privacy-safe, research-ready version of CanPath data, housed in a secure, cloud-based trusted research environment. Designed for early career researchers, trainees, and instructors alike, this session offers an engaging and supportive introduction to analyzing large-scale health data in the cloud. Participants will learn how to navigate a cloud-based trusted research environment, explore the structure and content of the synthetic dataset, and run R and Python-based pipelines that mirror real epidemiological research scenarios.

Instructors:

- Sheraz Cheema, CanPath Data Manager
- Megan Fleming, CanPath Communications & Knowledge Translation Officer
- Jeff Brabec, Lifebit Senior Client Success Manager

- Sangram Keshari Sahu, Lifebit Senior Solutions Architect

2:15 – 2:45 am
Hyatt Grand Foyer 3

BREAK

2:15 pm
Hyatt Grand Foyer 4



Storytelling Circle

DESC

2:45 – 4:15 pm
Imperial 4/6

Concurrent D1: Precision Oncology Continuum: From Molecular Marks to Therapeutic Resistance Pathways

Co-chairs:

- Jennifer Chan, MD, University of Calgary
- Aiden Razavi, Research Advocate

Presenters:

- Kirsty M. Ferguson, University of British Columbia
Proteomics: complementary insights in precision oncology
- Paola Marcato, PhD, Dalhousie University
THSD4 is a novel mediator of T cell exclusion and anti-PD-1 resistance in breast cancer
- Paola Marcato, PhD, Dalhousie University
Highly selective inhibition of ALDH1A3 impedes breast cancer growth and metastasis by blocking ALDH1A3-driven transcriptional programs
- William You, Sunnybrook Research Institute, University of Toronto
Uncovering the Molecular Drivers of Liver Metastasis in Gastroenteropancreatic Neuroendocrine Tumours (GEP-NETs)

2:45 – 4:15 pm
Imperial 1/2/3

Concurrent D2: From Risk Assessment, Screening and Surveillance to Survivorship

Co-chairs:

- Hermann Nabi, PhD, HDR, Centre de recherche du CHU de Québec-Université Laval
- Sandra Dudych, Research Advocate

Presenters:

- Mark Basik, MD, McGill University - Lady Davis Institute
Establishing an academic hospital based liquid biopsy platform for MRD testing in breast cancer patients
- Audrey Dong, Hospital for Sick Children, University of Toronto
Guidelines for screening for late effects in survivors of young adult cancers: A systematic review
- Margaret L. McNeely, PhD, University of Alberta
Preliminary findings from the Alberta Cancer Exercise Hybrid Effectiveness-Implementation Study
- Dylan E. O'Sullivan, Alberta Health Services, University of Calgary
Risk of developing a different-site subsequent primary cancer among cancer survivors in Canada
- Aline Talhouk, University of British Columbia

2:45 – 4:15 pm
Imperial 5/7/9

Concurrent D3: Health Human Resources in Cancer Control

Co-chairs:

- Winson Cheung, MD, MPH, FRCPC, University of Calgary
- Howard Dellar, Research Advocate

Presenters:

- Philip Ding, MD, University of Calgary
[Rethinking future workforce planning by developing novel metrics of complexity in cancer care](#)
- Madeline Li, MD, PhD, Princess Margaret Cancer Centre, University of Toronto
[The Human Crisis in Cancer: A Lancet Oncology Commission](#)
- Peyman Pakseresht, Alberta Health Services
[How did COVID-19 impact practice of palliative homecare and patient outcomes?](#)
- Kristi MacKenzie, Canadian Association of Provincial Cancer Agencies and Sri Navaratnam, MD, CancerCare Manitoba
[Building a Sustainable Oncology Workforce: A Pan-Canadian Collaborative Call to Action](#)
- Tara Sampalli, PhD, Dalhousie University and Stuart Peacock, DPhil, Canadian Centre for Applied Research in Cancer Control (ARCC)
[A Pan-Canadian Approach to Health Human Resources in Cancer Control: Learning from Scalable Innovations and Policy Directions](#)

2:45 – 4:15 pm
Imperial 8

Concurrent D4: Lung Cancer in Canada: Plans and Trends

Co-chairs:

- Darren R. Brenner, PhD, University of Calgary
- Megan Sewell, Research Advocate

Presenters:

- Annemarie Edwards, MBA, Canadian Cancer Society
[Transforming the Future of Lung Cancer in Canada: Co-Creating a Pan-Canadian Action Plan to Reduce Lung Cancer Mortality by 30%](#)
- Kirk Graff, PhD, University of Calgary
[Impact of PLCOm2012 Ethnicity Model Variations on Eligibility for Lung Cancer Screening](#)
- Ashmeet Mand, University of British Columbia – Okanagan
[Youth and Nicotine pouches: The concerning new trend examined through TikTok and its implications for cancer prevention](#)
- Rafael Meza Rodriguez, BC Cancer
[Trends in adult combustible and non-combustible tobacco product use prevalence in the United States, 2014 to 2023](#)
- Ambreen Sayani, MD, PhD, Women's College Hospital
[Increasing Equity in Lung Cancer Prevention and Early Detection: Co-Evaluation of a Patient-Partnered Educational Intervention](#)

2:45 – 4:15 pm
Imperial Doll/Herald

Concurrent D5: Cervical Cancer and HPV-related Interventions

Co-chairs:

- Angeline Letendre, RN, PhD, Indigenous Cancer Research Network
- Robyn Wood, Research Advocate

Presenters:

- Maryam Darvishian, University of British Columbia

Predictors of participation in cervical cancer screening in Canada: Evidence from the Canadian Partnership for Tomorrow's Health

- Noah Doucette, Dalhousie University
Exploring the Intersectional Determinants of Human Papillomavirus (HPV) Vaccine Uptake in Nova Scotia, Canada: Towards Equitable and Inclusive Cancer Prevention
- Pranamika Khayargoli, University of Toronto
Incidence of oncogenic HPV genotypes 16 and 18 by HPV vaccination status, HIV status, and age group among urban gay, bisexual, and other men who have sex with men in Canada, 2017-2024
- Ioana Nicolau, University of Calgary
Vaccination and screening strategies to accelerate cervical cancer elimination in Canada: An OncoSim modeling study
- Gina Ogilvie, DPHIL, MD, MSc, FCFP, BC Women's Health Research Institute
Vaginally delivered therapeutic human papillomavirus (HPV) vaccines in women in rural LMICs

2:45 – 4:15 pm
Stephen AB

Concurrent D6: First Nations, Inuit and Métis Stories



Chair:

- Lois Edge, PhD, Athabasca University, MacEwan University, Yorkville University

Presenters:

- Veronica Big Plume, University of Calgary
Telling the stories of Indigenous Cancer Patient Multidisciplinary Rounds - an innovative model of equitable cancer care
- Angi Patel, University of Saskatchewan
Lived experiences of Métis cancer patients, survivors, and caregivers in Saskatchewan: Informing a Métis Cancer Control Strategy
- Angi Patel, University of Saskatchewan
Engaging with Indigenous Patients with Multiple Myeloma: Lessons Learned and Future Research
- Tanya Webster, CISSS de la Gaspésie - Centre de santé Listuguj
Mawlugutinej: Towards self-determined cancer care in Mi'gmaq territory - When ancestral knowledge and cultural safety save lives
- Celine Wick, MA, Métis National Council
Li Kawnsayr: Stories of Métis Cancer Journeys

2:45 – 4:15 pm
Walker/Bannerman



CanPath Synthetic Dataset Workshop – Part 2

Pre-registration required

Description provided above.

4:15 – 4:25 pm	<i>Transition to Lightning Sessions</i>
4:25 – 5:00 pm <i>Imperial 4/6</i>	<p>Lightning B1: Cancer Biology</p> <p>Chair: Elena Kuzmin, PhD, Concordia University, McGill University</p> <p>Presenters:</p> <ul style="list-style-type: none"> • Arielle Beaudoin, Université Laval <i>Ash2L: an epigenetic regulator of tumor invasion</i> • Félix Després, Université de Moncton <i>Identification of Molecular Targets Regulating the Entry of Platelet Derived Microparticles</i> • Varsha Reddy Durgempudi, McGill University <i>Soluble CD109 antagonizes EGFR-mediated pro-tumorigenic signaling and functional responses in head and neck squamous cell carcinoma</i> • Djazia Haferssas, Université de Montréal <i>FLT4, a novel regulator of Renal Cell Carcinoma progression</i> • Nickson Joseph, University of Saskatchewan <i>Novel Insights into the Clinical Relevance of Perineural Invasion</i> • Raheleh Niavarani, Princess Margaret Cancer Centre <i>Real-Time Imaging and Humanized Models Illuminate gamma delta T Cell Dynamics, Sphingolipid Metabolism, and AML Immunogenicity</i>
4:25 – 5:00 pm <i>Hyatt Imperial 1/2/3</i>	<p>Lightning B2: Metastasis</p> <p>Chair: Yuqing Feng, PhD, York University</p> <p>Presenters:</p> <ul style="list-style-type: none"> • Ana Isabel Castillo Orozco, McGill University <i>Integrative Transcriptomic Profiling of Metastatic Medulloblastoma using Patient-Derived Xenograft Models</i> • Yueyang Deng, McGill University <i>Bioresponsive Immunomodulator Nanocomplex for Selective Immunoengineering in Metastatic Lymph Node</i> • Seyedeh Sara Karimian, University of Alberta <i>Discovery of Adrenomenullin 2 as a driver of intratumoral cancer cell invasion, intravasation, and metastasis</i> • Isbel Lopetegui Gonzalez, University of Calgary <i>Prolactin and Cholesterol Signaling Crosstalk: a therapeutic target in breast cancer associated bone metastasis</i> • Leila Pirayeshfard, University of Alberta <i>Elucidating a novel role for the Bcl-2 family member BAD in breast cancer metastasis</i> • Areeba Qureshi, University of Toronto <i>Tol mice overcome the immunogenicity of reporter proteins and enable improved in-vivo cancer-immunity and metastasis studies</i>
4:25 – 5:00 pm <i>Hyatt Imperial 5/7/9</i>	<p>Lightning B3: Prevention and Screening</p> <p>Chair: Yiming Wang, MD, PhD, FRCPC, The Hospital for Sick Children, University of Toronto</p> <p>Presenters:</p> <ul style="list-style-type: none"> • Jennifer Anderson, Alberta Health Services <i>Understanding cancer prevention knowledge among adolescents and young adults – a cross-sectional study</i> • Ace Chan, University of British Columbia

Preventing Cancer in the Gender Minority Population: Preliminary Results from a Knowledge Synthesis of Existing Practice

- Ananya Chandra, McGill University
Values shaping risk-stratified breast cancer screening participation among South Asian people in Montreal and Toronto: A constructivist grounded theory study
- Maria Diaz, University of Saskatchewan
Preventing Cancer Through Métis Cultural Revitalization: A Framework for Saskatchewan
- Petra Famiyeh, Women's College Hospital
Evaluating the Readability, Understandability, Actionability and Health Content of Web-Based Patient Education Materials on Cervical Cancer Screening Through an Equity Lens
- Madison Fullerton, Praxus Health
Mobilizing Community Health Ambassadors to Support HPV Self-Screening Among Underscreened Populations in Alberta

4:25 – 5:00 pm
Hyatt Imperial 8

Lightning B4: Treatment and Drug Resistance

Chair: Miffy Hok Yan Cheng, PhD, University of British Columbia

Presenters:

- Ovin Amarasinghe, CancerCare Manitoba
Aberrant Inflammatory Response Associated with Chemotherapy-Resistance in T-Cell Acute Lymphoblastic Leukemia
- Sandrine Busque, McGill University
Identification of Gemcitabine-Resistant Populations Using scRNAseq in TNBC Patient-Derived Xenografts
- Mallory I. Frederick, Centre de recherche du Centre hospitalier de l'Université de Montréal (CRCHUM)
Improving efficacy of PARP inhibition by targeting ribosome biogenesis in triple-negative breast cancer
- Gurveer Gill, University of Calgary
High Resolution Spatial Analyses Identifies Immunotherapy Resistance Mechanisms to CAR T-Cell Therapy in ASPS
- Gabrielle Herzenberg, University of British Columbia
mTor Inhibition in the Management of Recurrent Metastatic Solid Pseudopapillary Tumor of the Pancreas
- Anavasadat Sadr Hashemi Nejad, Université de Montréal
Targeting the translational machinery to overcome kinase inhibitor resistance in melanoma

4:25 – 5:00 pm
Hyatt Doll/Herald

Lightning B5: Enhancing Immunotherapy

Chair: Éva Michaud, PhD, McGill University Health Centre (MUHC - Glen) - Royal Victoria Hospital

Presenters:

- Jalal Laaraj, Centre de recherche du Centre hospitalier universitaire de Québec-Université Laval
Gut microbiome influences the antitumor response to BCG immunotherapy in bladder cancer
- Paul Jerard Layug, CancerCare Manitoba
Precise tuning of CAR expression mitigates exhaustion and hyperinflammation in CAR T cell therapy
- Richard Nauman, Queen's University
Clinical Bacillus Calmette-Guérin Strains Induce Distinct Trained Immunity Profiles
- Amy Shupe, University of Calgary
Microbial Metabolite Modulation of CAR-T Therapy
- Saif Sikdar, University of Calgary

Microbiome-derived hydroxyphenyl propanoates enhance antitumour immunity by potentiating gasdermin D activity in tumour-associated myeloid cells

- Madison Wickenberg, University of Alberta
Investigating the Use of PCSK9 Inhibitor Alirocumab for use in Combination Therapy with PD-1 Inhibitors to Treat Melanoma

4:25 – 5:00 pm
Stephen AB

Lightning B6: Survivorship

Chair: Fay Strohschein, PhD, University of Calgary

Presenters:

- Arafat Ul Alam, Alberta Health Services
Subsequent primary neoplasm risk among survivors of adolescent and young adult cancer: a population-based study from Alberta, Canada
- Sanjeev Bista, University of Calgary
Colorectal and breast cancer screening adherence among cancer survivors: A systematic review and meta-analysis
- Kelcey Bland, University of British Columbia
The Cancer Rehabilitation and Exercise – Advanced Cancer (CaRE-AC) Program: A Qualitative Exploration of Intervention Delivery Challenges, Successes, and Sustainability
- Haley Schuman, University of Calgary
Mixed-Methods Exploration of Stakeholder Perspectives Toward Psychedelic-Assisted Therapies for Cancer-Related Psychosocial Symptoms
- Sarah Scruton, Nova Scotia Health
Living with and beyond advanced cancer: Understanding patient needs and experiences
- Jenna Sim, University of Calgary
Physical Activity Interventions for Pain Management of Aromatase Inhibitor Induced Musculoskeletal Syndrome: A Systematic Review

4:25 – 5:00 pm
Walker/Bannerman

Lightning B7: Improving Cancer Care

Chair: Haitham Shoman, MD, PhD, McMaster University

Presenters:

- Olivia Benguigui, McGill University - Lady Davis Institute
Using a Serious Illness Conversation Guide to Improve the Quality of Life of Blood Cancer Patients
- Antoine Frasier, Centre de recherche du Centre hospitalier universitaire de Québec-Université Laval / Université du Québec à Trois-Rivières
Toward Standardized Clinical Assessment of CIPN in Rehabilitation: Identifying Relevant Tools for Practice
- Christian Lopez, Princess Margaret Cancer Centre
Mixed Methods Evaluation of Implementation Outcomes, Barriers, and Facilitators of an Electronic Patient-Reported Outcome System for Cancer Rehabilitation
- John-Jose Nunez, BC Cancer
Developing an AI-Powered Assistant for Personalized Navigation in Cancer Care
- Heather Roy, RadFlix
Enhancing Pediatric Radiation Therapy Through Video-Based Distraction and Empowerment
- Morgan Stirling, University of Manitoba
Beyond the Binary: Engaging Trans & Gender Diverse people to improve cancer health services research

5:00 – 5:10 pm

Transition to Telus Exhibit Hall (C/D/E)

5:10 – 6:30 pm
Telus Exhibit Hall
(C/D/E)



Poster Session 2 & Exhibits

This poster session features a broad range of research topics. Explore the exhibit hall and meet with researchers and trainees to hear about their research and our exhibitors to learn more about their organizations.

7:00 – 9:00 pm
Walker/Bannerman



**Arnie Charbonneau
Cancer Institute**



Charbonneau Networking Event

Pre-registration required

For Full or Associate Members, Clinical Fellows or Postdoctoral Fellows affiliated with the Charbonneau Cancer Institute, this engaging and informal Networking Mixer provides an exciting opportunity to connect with fellow cancer researchers across disciplines and career stages. Whether you're a faculty member, clinical fellow, or postdoctoral fellow, this event offers the perfect setting to spark new collaborations, exchange ideas, and expand your professional network in a relaxed, social atmosphere.

**Tuesday,
November 4, 2025**

8:00 – 9:30 am
Telus Macleod Hall



**Canadian Cancer
Society** **Société
canadienne
du cancer**

Plenary 3: Metabolic Health and Cancer

Co-chairs:

- Josie Ursini-Siegel, PhD, McGill University – Lady Davis Institute
- John Corriveau, Research Advocate

Presenters:

- Peter Siegel, PhD, McGill University – Lady Davis Institute
TBD
- Marc Gunter, PhD, Imperial College London
[Metabolic Health and Cancer: Epidemiology, mechanisms and prevention targets](#)
- Lin Yang, PhD, University of Calgary
[Resetting metabolic health through physical activity: implications for cancer prevention and control](#)

9:30 – 10:00 am
Hyatt Grand Foyer 3

BREAK

10:00 – 11:30 am
Telus Macleod Hall



Plenary 4: Rising Cancer Rates in Adults Under 50 Years: What do we need to know?

Co-chairs:

- Alexandra King, MD, FRCPC, MD, FRCPC, FCAHS, Nipissing First Nation, University of Saskatchewan
- Chantale Thurston, Research Advocate

Presenters:

- Peter Hutchison, PhD, University of British Columbia
TBD
- Sevtap Savas, PhD, Memorial University of Newfoundland
Cancer and young individuals: An advocate's point of view
- Darren R. Brenner, PhD, University of Calgary
TBD
- Ludmil B. Alexandrov, PhD, University of California San Diego
Geographic and Age-Related Variations in Mutational Processes in Colorectal Cancer

11:30 am – 12:30 am
Telus Macleod Hall

Closing Ceremony

Co-chairs:

- Dajan O'Donnell, PhD, Chair, CCRA Advisory Board
- Craig Earle, MD, MSc, FRCPC, CEO, Canadian Partnership Against Cancer

In Memoriam: Philip E. Branton

Elder Closing

12:30 pm
Telus Macleod
Prefunction

Grab & Go Lunch

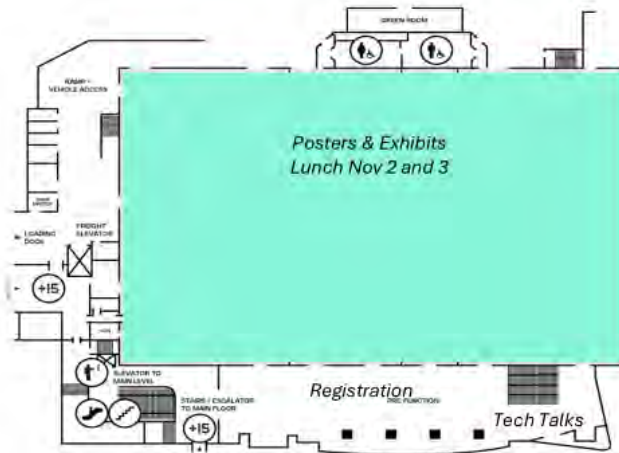
12:30 pm – 2:00 pm
Telus Exhibit Hall C

VIP Lunch

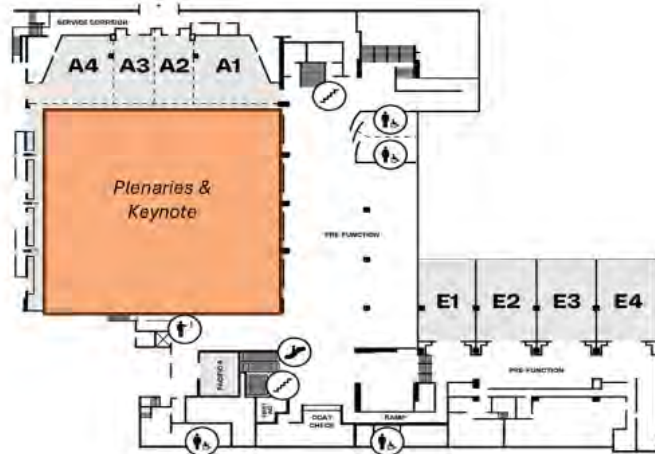
By invitation only

VENUE MAPS

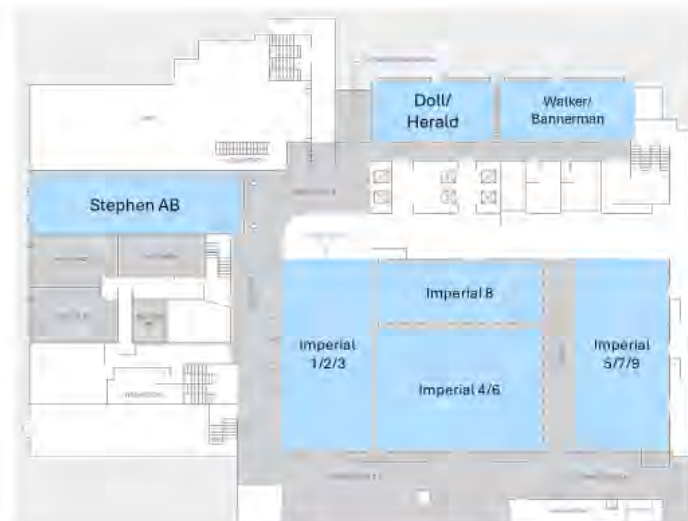
*Telus Exhibit Hall (C, D, E)
North Building, Second Level*



*Telus McLeod Hall
South Building, Lower Level*



*Hyatt Third Floor - Concurrent and
Lightning Sessions and Workshops*



THANK YOU TO CANADIAN PARTNERSHIP AGAINST CANCER

STAFF AND VOLUNTEERS

Canadian Partnership Against Cancer

- Harini Aiyer, PhD
- Kris Atterbury
- Gelek Badheytsang
- Kimberly Badovinac
- Florence Bentley
- Marcia Choo-Son
- Carlo Colalillo
- Amber Crane
- Corinne Daly
- Neda Didani
- Isabel Everen
- Leslie Frey
- Sara Goncalves
- Kirk Graff
- Naomi Lu
- Greg Mitchell
- Slobodan Momcilovic
- Gloria Mwawasi
- Talia Pfefferle
- Nadia Scott
- Raquel Shaw Moxam
- Josh Tobias
- Sheila Zhang
- Jessie Yin

Volunteers

- Malak Ibrahim, Alberta Health Services
- Lu Kuang, Alberta Health Services
- Lucille Dupuis, Registration Support
- Naseem Shaikh, CIHR-ICR
- Shirley Chung, CIHR-ICR
- Irina Navarrete, PhD, Cancer Research Society
- Céline Schott, PhD, Cancer Research Society

Exposoft Solutions (Conference Organization)

- Bassel Annab
- Wajih Bilgrami
- Judy Lichty
- Leila Somerville